

# NEO-Line Kaso 650 - 5,9 kW

## Overview

- Data sheet
- Side radiation area convective hot air according to EN16510-2-1
- Side radiation area convective hot air according to EN16510-2-2
- Dimensional drawings:
  - Basic model
  - Frame 3-sided 40 mm
  - Frame 3-sided 60 mm
  - Frame 3-sided 80 mm
  - Frame 4-sided 40 mm
  - Frame 4-sided 60 mm
  - Frame 4-sided 80 mm
- Product data sheet inkl. energy label



*NEO-Line Kaso 650*



*NEO-Line Kaso 650 with Frame 4-sided 60 mm*

# NEO-Line Kaso 650 - 5,9 kW

## Data sheet

### Details

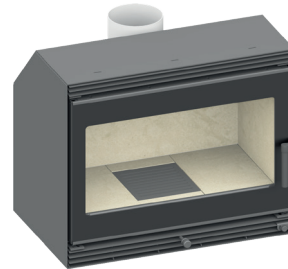
- Welser profile frame
- Inner lining vermiculite
- Hinged door, self-closing
- Interchangeable door hinge
- Glass: 1-section
- Adjustable feet adjustable through the combustion chamber
- Flue gas connector adjustable through the combustion chamber

### Standard

- Combustion air connector 125 mm
- Flue gas connector 150 mm

### Optional

- Convection fan
- Frames



NEO-Line Kaso 650



NEO-Line Kaso 650 with Frame 4-sided 60 mm



Energy efficiency  
class in accordance  
with (EU) 2015/1186



1. Federal Emissions  
Control Ordinance  
Stage 2



There may be modifications to technical details caused by ongoing developments;  
subject to errors and omissions. Dated: 09/2025

# NEO-Line Kaso 650 - 5,9 kW

## Data sheet

### Technical data

• Nominal heat output	5,9 kW
• Thermal output range <sup>1</sup>	---
• Efficiency	>80 %
• Insulation thickness (with a wall that does not need to be protected, based on TROL, Reference insulation material)	80 mm
• Insulation thickness (Combustible components based on TROL 2022)	WDS 2 - WDS 4 H
• Combustion air connector	Ø 125 mm
• Type of combustion air supply	VL <sub>Room</sub> , VL <sub>External</sub>
• Recommended length of logs	33 cm
• Weight	100 kg
• Heat distribution: through the viewing window	30 %
• Heat distribution: convective output	70 %
• Recommended free cross-section <sup>2</sup>	Supply air 991 cm <sup>2</sup> Recirculation air 826 cm <sup>2</sup>

**Data for chimney sweep** according to DIN EN 133844  
(closed operation)

### Triple values with nominal heat output

• Flue gas mass flow	6,7 g/s
• Flue gas temperature	204 °C
• Required delivery pressure	12 Pa

<sup>1</sup> DThe thermal output range is dependent on the volume and quality of wood loaded. Only use the nominal heat output triple values to calculate the chimney.

<sup>2</sup> DThe calculation was calculated according to TROL 2022 - Chapter 7.2.3.1 Supply and recirculation air cross sections. Free cross section in cm<sup>2</sup> for grid or break-through tile based on the heat output for air heating. Supply air grille 240 cm<sup>2</sup>/kW, recirculation air grille 200 cm<sup>2</sup>/kW. The calculated values may be exceeded or fallen short of by up to 20%.

There may be modifications to technical details caused by ongoing developments; subject to errors and omissions. Dated: 09/2025



Energy efficiency class in accordance with (EU) 2015/1186

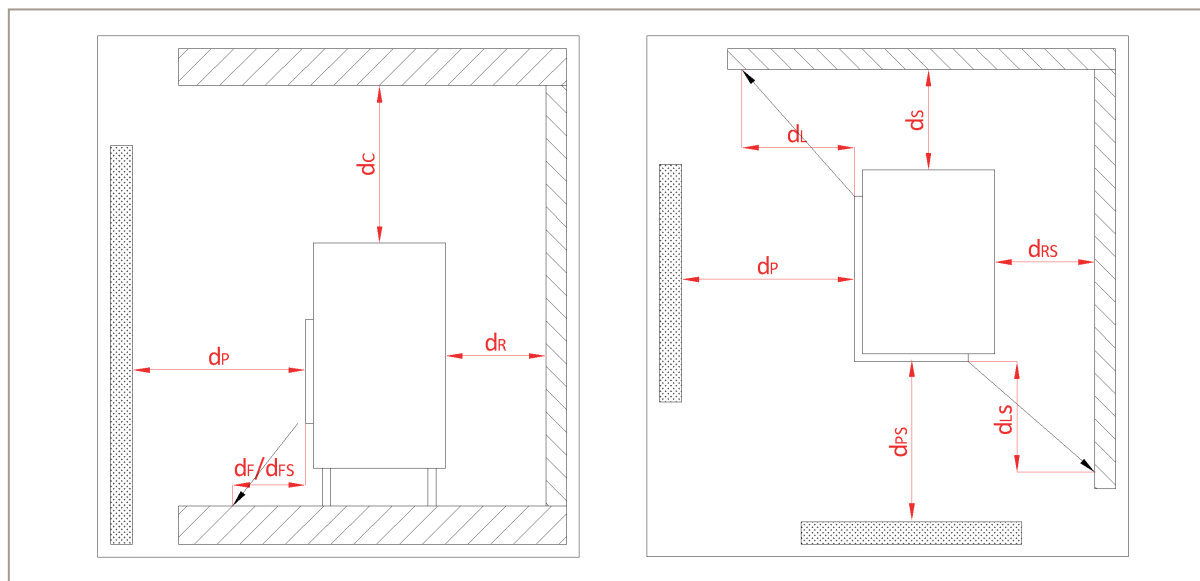


1. Federal Emissions Control Ordinance Stage 2



# NEO-Line Kaso 650 - 5,9 kW

Side radiation area convective hot air according to EN16510-2-1

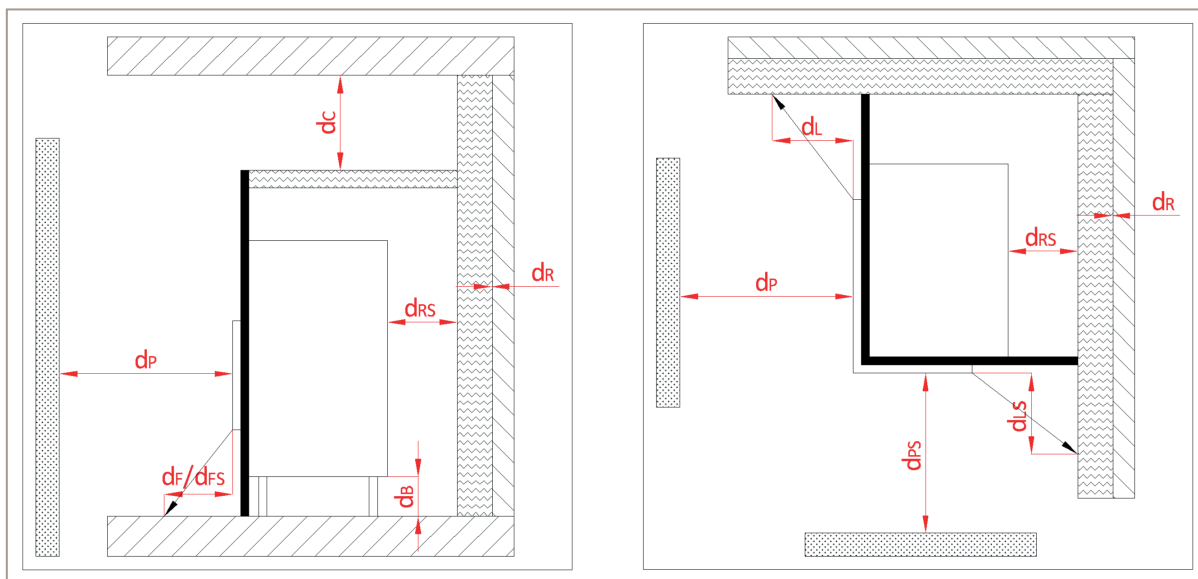


View from the side and from above

Minimum distance to combustible materials:	Abbr.	Fireplace cassette inserts:
		NEO-Line Kaso 650 - 5,9 kW
ceiling	(d <sub>c</sub> )	>750 mm
rear and side (between the insulation and the test wall)	(d <sub>r</sub> )	200 mm
rear and side (between the insulation and the insert)	(d <sub>s</sub> )	200 mm
side radiation area front glass	(d <sub>L</sub> )	200 mm
side radiation area side glass	(d <sub>LS</sub> )	0 mm
to adjacent combustible materials front glass	(d <sub>p</sub> )	800 mm
to adjacent combustible materials side glass	(d <sub>ps</sub> )	0 mm
distance on the floor to the front	(d <sub>F</sub> )	0 mm
distance on the floor to the side	(d <sub>FS</sub> )	0 mm
distance below the fireplace	(d <sub>B</sub> )	> 320 mm

# NEO-Line Kaso 650 - 5,9 kW

Side radiation area convective hot air according to EN16510-2-2



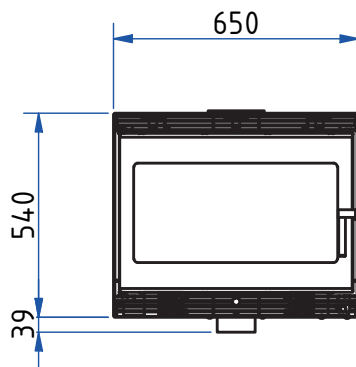
View from the side and from above

Minimum distance to combustible materials:	Abbr.	Fireplace cassette inserts:
		NEO-Line Kaso 650 - 5,9 kW
ceiling	( $d_C$ )	>750 mm
rear and side (between the insulation and the test wall)	( $d_R$ )	0 mm
rear and side (between the insulation and the insert)	( $d_{RS}$ )	0 mm
side radiation area front glass	( $d_L$ )	300 mm
side radiation area side glass	( $d_{LS}$ )	0 mm
to adjacent combustible materials front glass	( $d_P$ )	800 mm
to adjacent combustible materials side glass	( $d_{PS}$ )	0 mm
distance on the floor to the front	( $d_F$ )	0 mm
distance on the floor to the side	( $d_{FS}$ )	0 mm
distance below the fireplace	( $d_B$ )	> 320 mm

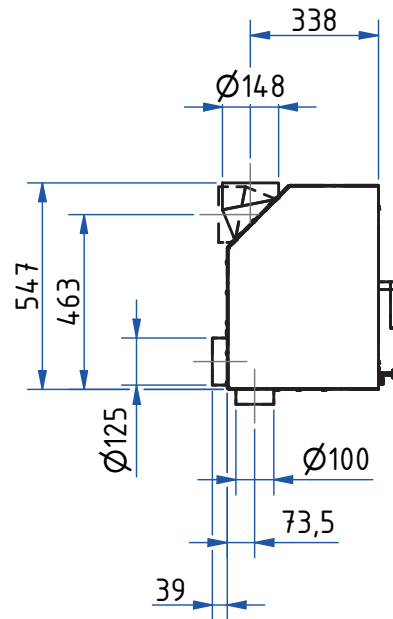
# NEO-Line Kaso 650

## Dimensional drawings

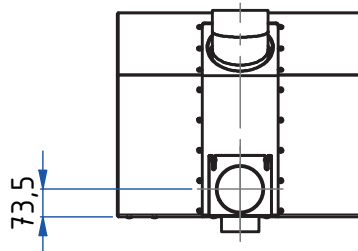
Front view, scale 1:20



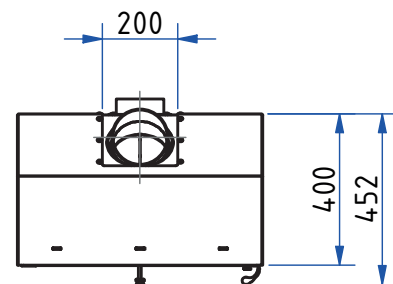
Side view, scale 1:20



Rear view, scale 1:20



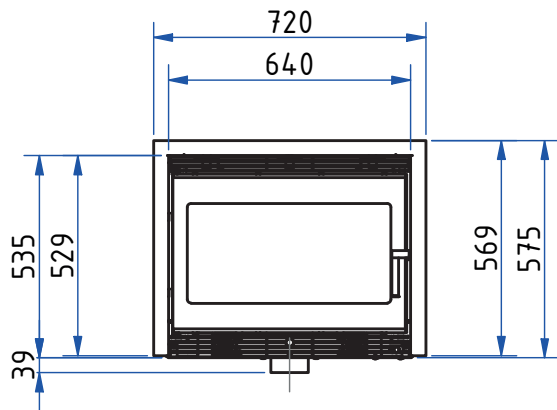
Top view, scale 1:20



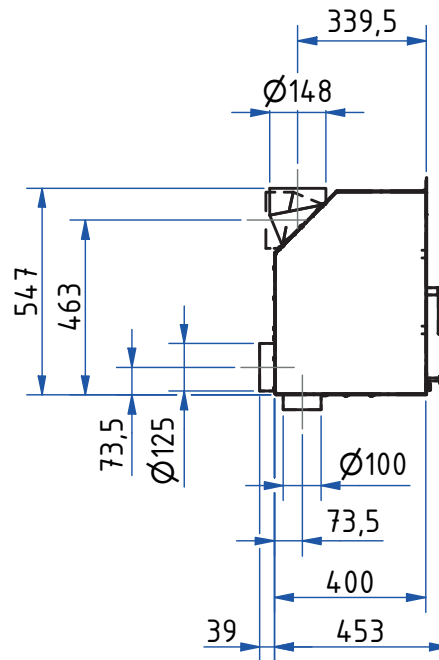
# NEO-Line Kaso 650

Dimensional drawings with Frame 3-sided 40 mm

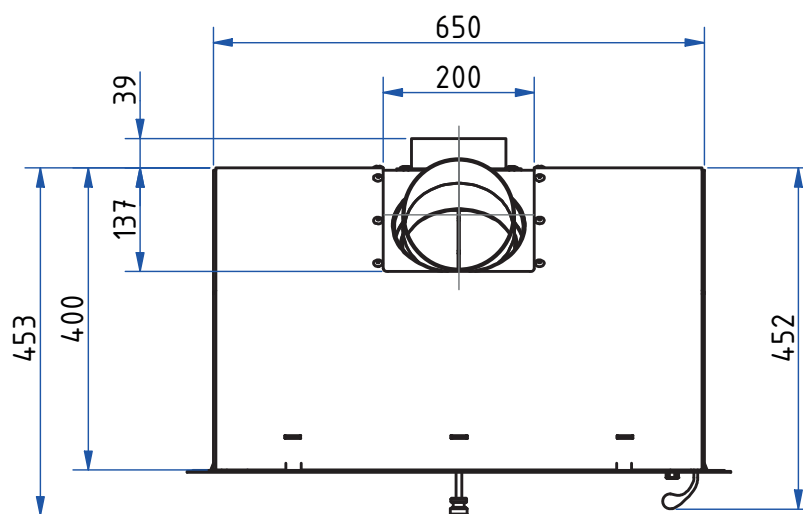
Front view, scale 1:20



Side view, scale 1:20

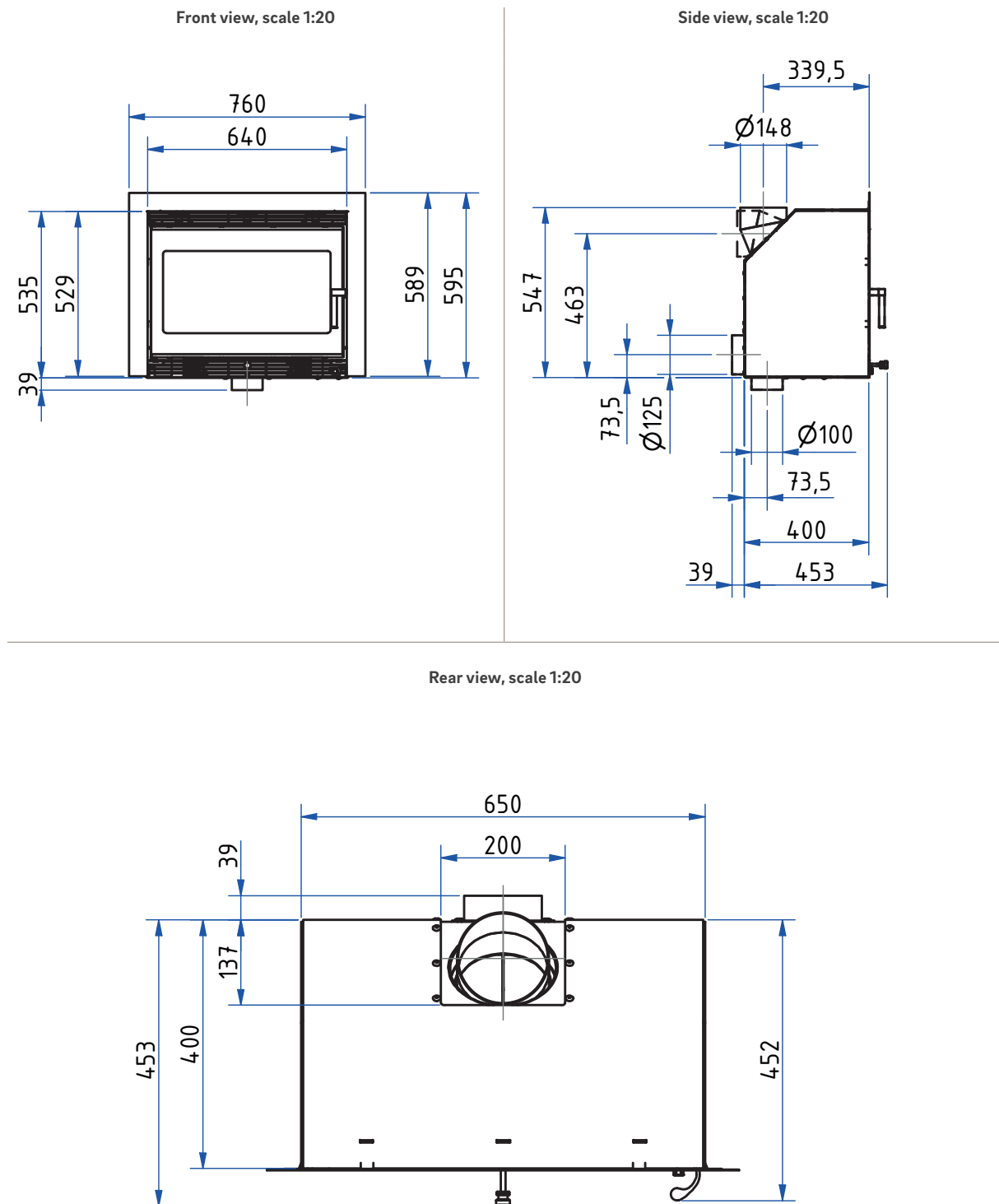


Rear view, scale 1:20



# NEO-Line Kaso 650

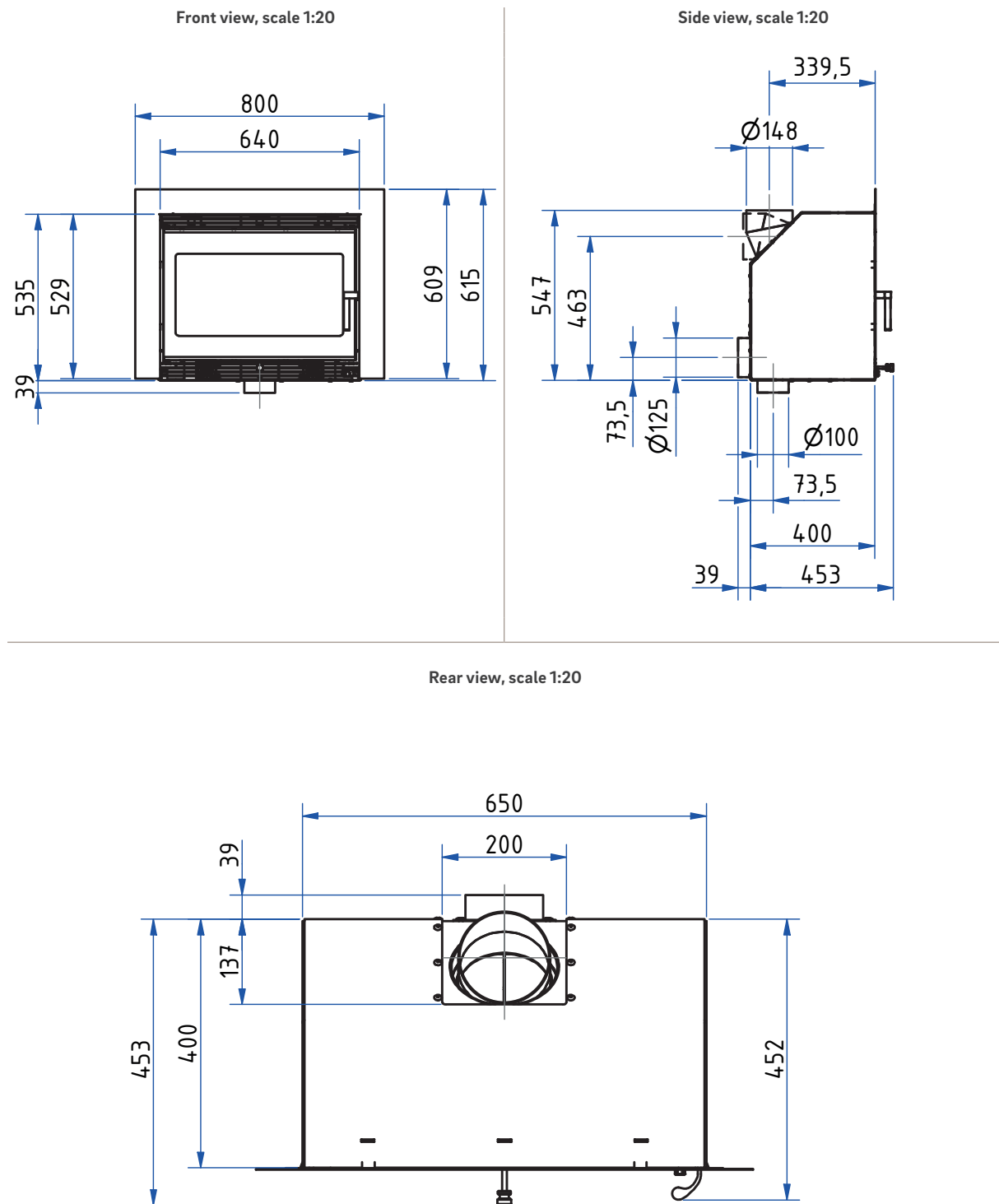
Dimensional drawings with Frame 3-sided 60 mm





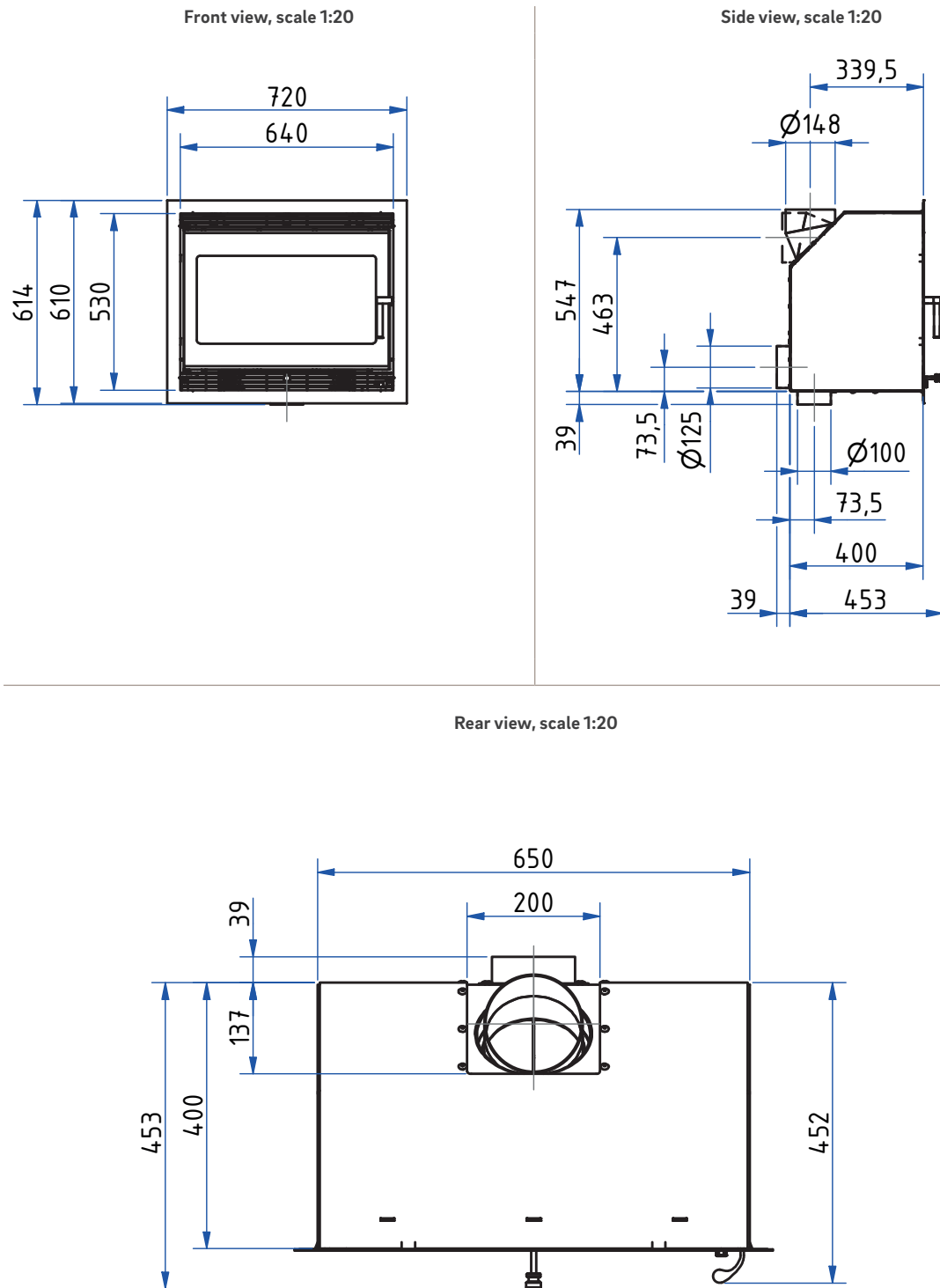
# NEO-Line Kaso 650

Dimensional drawings with Frame 3-sided 80 mm



# NEO-Line Kaso 650

Dimensional drawings with Frame 4-sided 40 mm

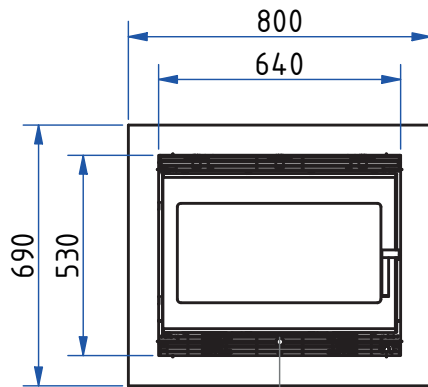




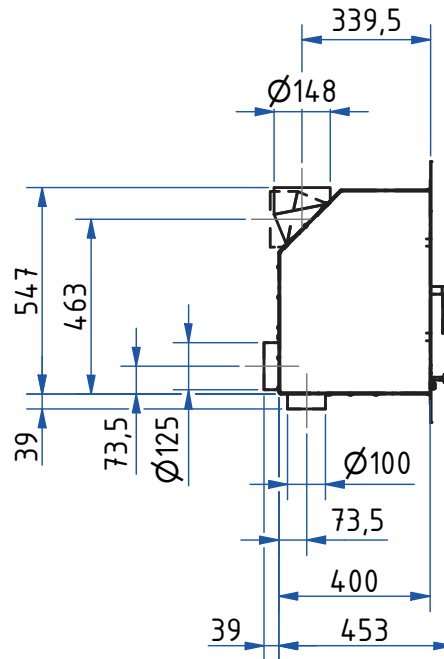
# NEO-Line Kaso 650

Dimensional drawings with Frame 4-sided 80 mm

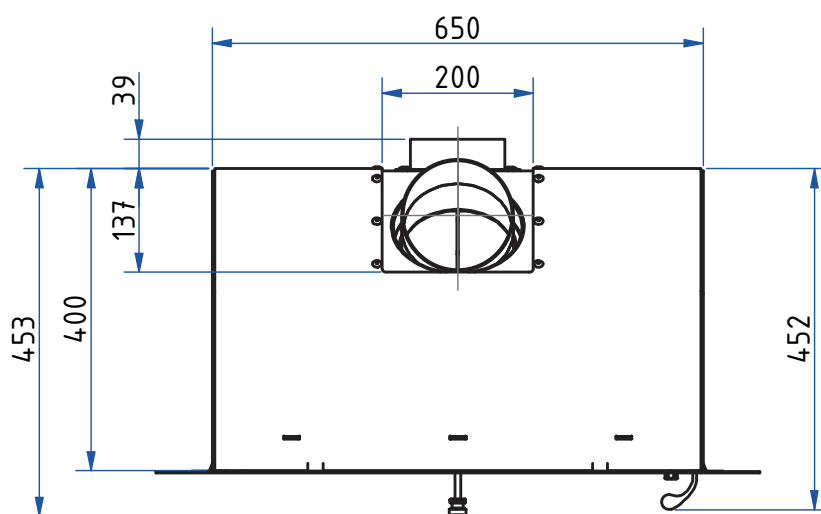
Front view, scale 1:20



Side view, scale 1:20



Rear view, scale 1:20



## Product data sheet

Regulation (EU) 2015/1186 supplementing Directive 2010/30/EU

	NEO-Line Kaso 650
Supplier's name:	Camina & Schmid Feuerdesign und Technik GmbH & Co. KG
Supplier's model identifier:	NEO-Line Kaso 650
Energy efficiency class:	A
Direct heat output (kW)	5,9
Indirect heat output (kW):	–
Energy efficiency index (EEI):	107,0
Energy efficiency at nominal heat output (%):	80,7
Notes for specific precautions, installation or maintenance:	Please note the reference in the assembly instructions and operating manuals!

*There may be modifications to technical details caused by ongoing developments; subject to errors and omissions. Dated: 01/2026*

	NEO-Line Kaso 650
Room heat output (kW)	5,9
Partial load-thermal output (kW)	–
Partial load-room heat output (kW)	–
Efficiency partial load - thermal output (%)	–
Room heating annual efficiency at nominal heat output	70,7
CO - Emissions (13% O <sub>2</sub> ) at nominal heat output (mg/m <sup>3</sup> )	< 1250
NOX - Emissions (13% O <sub>2</sub> ) at nominal heat output (mg/m <sup>3</sup> )	< 200
OGC - Emissions (13% O <sub>2</sub> ) at nominal heat output (mg/m <sup>3</sup> )	< 120
Particles - Emissions (13% O <sub>2</sub> ) at nominal heat output (mg/m <sup>3</sup> )	< 40
Required delivery pressure at nominal heat output (Pa)	12
Required delivery pressure at partial load-thermal output (Pa)	–
Chimney designation according chimney standard	T 400
Suitable for continuous burning operation (CON) or part-time operation (INT)	INT
Minimum distance to combustible components based on TROL 2022	WDS 2 - WDS 4H
Maximum carrying capacity by chimney (kg)	100

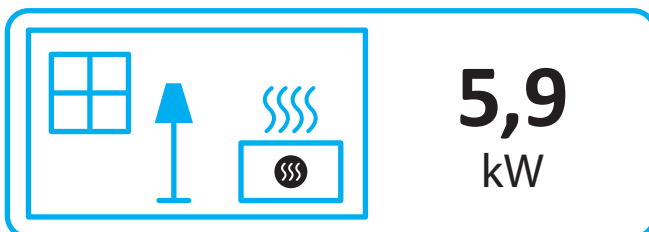
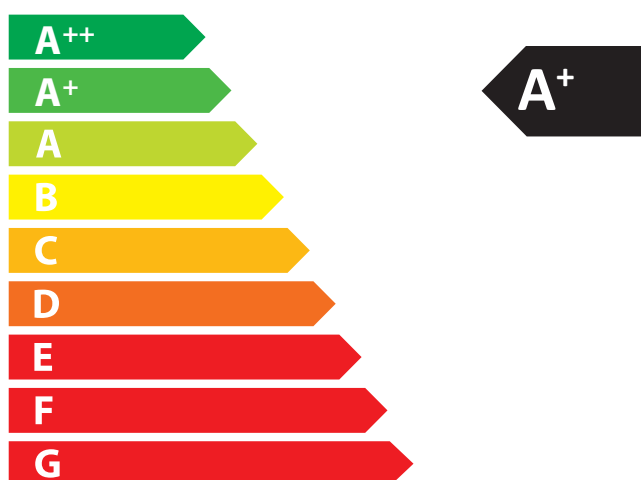
*There may be modifications to technical details caused by ongoing developments; subject to errors and omissions. Dated: 01/2026*



ENERG  
енергия · ενέργεια



Camina  Schmid NEO-Line Kaso 650



ENERGIA · ЕНЕРГИЯ · ΕΝΕΡΓΕΙΑ · ENERGIJA · ENERGY · ENERGIE · ENERGI

2015/1186