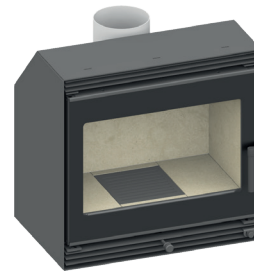


NEO-Line Kaso 550

Overview

- Data sheet
- Side radiation area convective hot air according to EN16510-2-1
- Side radiation area convective hot air according to EN16510-2-2
- Dimensional drawings:
 - Basic model
 - Frame 3-sided 40 mm
 - Frame 3-sided 60 mm
 - Frame 3-sided 80 mm
 - Frame 4-sided 40 mm
 - Frame 4-sided 60 mm
 - Frame 4-sided 80 mm
- Product data sheet inkl. energy label



NEO-Line Kaso 550



NEO-Line Kaso 550 with Frame 4-sided 60 mm

NEO-Line Kaso 550

Data sheet

Details

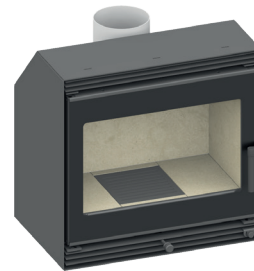
- Welser profile frame
- Inner lining vermiculite
- Hinged door, self-closing
- Interchangeable door hinge
- Glass: 1-section
- Adjustable feet adjustable through the combustion chamber
- Flue gas connector adjustable through the combustion chamber

Standard

- Combustion air connector 125 mm
- Flue gas connector 150 mm

Optional

- Convection fan
- Combustion air connector 100 mm
- Frames



NEO-Line Kaso 550



NEO-Line Kaso 550 with Frame 4-sided 60 mm



Energy efficiency
class in accordance
with (EU) 2015/1186



1. Federal Emissions
Control Ordinance
Stage 2



There may be modifications to technical details caused by ongoing developments;
subject to errors and omissions. Dated: 09/2025

NEO-Line Kaso 550

Data sheet

Technical data

• Nominal heat output	4,9 kW
• Thermal output range ¹	---
• Efficiency	>80 %
• Insulation thickness (with a wall that does not need to be protected, based on TROL, Reference insulation material)	80 mm
• Insulation thickness (Combustible components based on TROL 2022)	WDS 2 - WDS 4 H
• Combustion air connector	Ø 125 mm
• Type of combustion air supply	VL _{Room} , VL _{External}
• Recommended length of logs	33 cm
• Weight	83 kg
• Heat distribution: through the viewing window	30 %
• Heat distribution: convective output	70 %
• Recommended free cross-section ²	Supply air 823 cm ² Recirculation air 686 cm ²

Data for chimney sweep according to DIN EN 133844
(closed operation)

Triple values with nominal heat output

• Flue gas mass flow	5,5 g/s
• Flue gas temperature	207 °C
• Required delivery pressure	12 Pa

¹ DThe thermal output range is dependent on the volume and quality of wood loaded. Only use the nominal heat output triple values to calculate the chimney.

² DThe calculation was calculated according to TROL 2022 - Chapter 7.2.3.1 Supply and recirculation air cross sections. Free cross section in cm² for grid or break-through tile based on the heat output for air heating. Supply air grille 240 cm²/kW, recirculation air grille 200 cm²/kW. The calculated values may be exceeded or fallen short of by up to 20%.

There may be modifications to technical details caused by ongoing developments; subject to errors and omissions. Dated: 09/2025



Energy efficiency class in accordance with (EU) 2015/1186

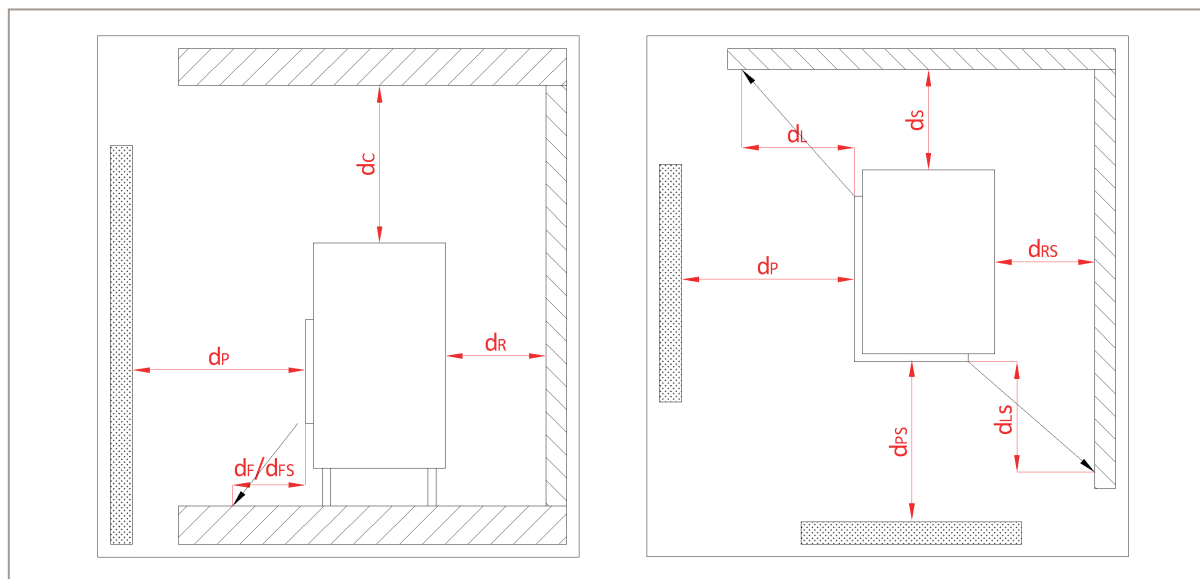


1. Federal Emissions Control Ordinance Stage 2



NEO-Line Kaso 550

Side radiation area convective hot air according to EN16510-2-1

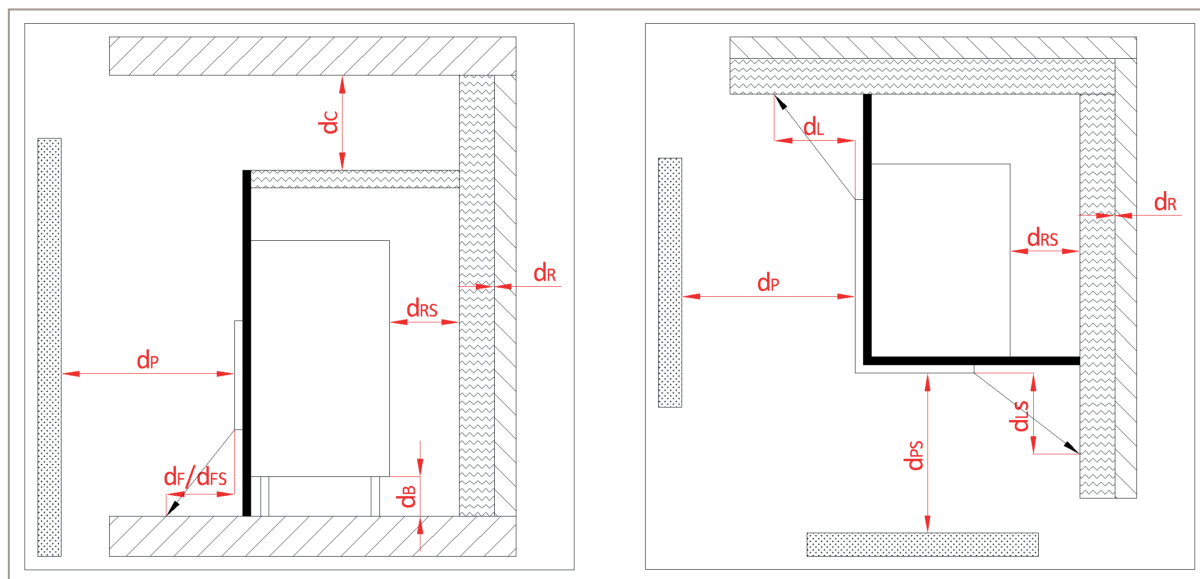


View from the side and from above

Minimum distance to combustible materials:	Abbr.	Fireplace cassette inserts:
		NEO-Line Kaso 550
ceiling	(d _C)	>750 mm
rear and side (between the insulation and the test wall)	(d _R)	200 mm
rear and side (between the insulation and the insert)	(d _S)	150 mm
side radiation area front glass	(d _L)	200 mm
side radiation area side glass	(d _{LS})	0 mm
to adjacent combustible materials front glass	(d _P)	800 mm
to adjacent combustible materials side glass	(d _{PS})	0 mm
distance on the floor to the front	(d _F)	0 mm
distance on the floor to the side	(d _{FS})	0 mm
distance below the fireplace	(d _B)	> 320 mm

NEO-Line Kaso 550

Side radiation area convective hot air according to EN16510-2-2



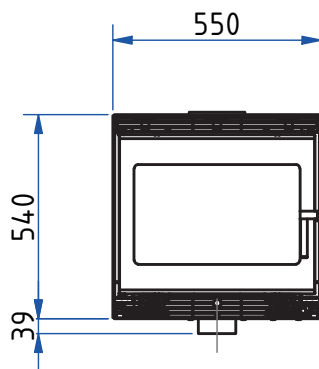
View from the side and from above

Minimum distance to combustible materials:	Abbr.	Fireplace cassette inserts:
		NEO-Line Kaso 550
ceiling	(d_C)	>750 mm
rear and side (between the insulation and the test wall)	(d_R)	0 mm
rear and side (between the insulation and the insert)	(d_{RS})	0 mm
side radiation area front glass	(d_L)	200 mm
side radiation area side glass	(d_{LS})	0 mm
to adjacent combustible materials front glass	(d_P)	800 mm
to adjacent combustible materials side glass	(d_{PS})	0 mm
distance on the floor to the front	(d_F)	0 mm
distance on the floor to the side	(d_{FS})	0 mm
distance below the fireplace	(d_B)	> 320 mm

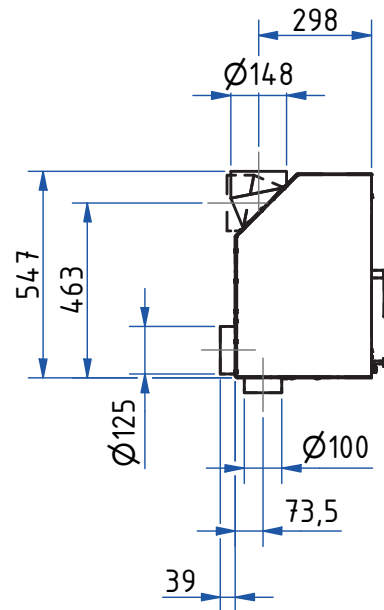
NEO-Line Kaso 550

Dimensional drawings

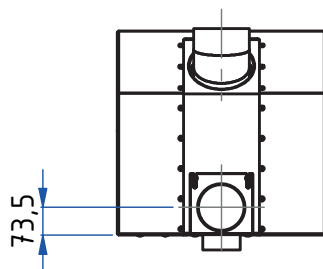
Front view, scale 1:20



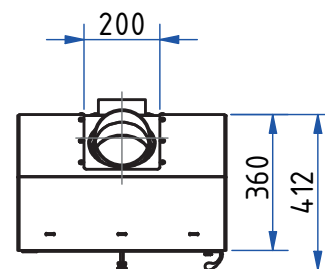
Side view, scale 1:20



Rear view, scale 1:20



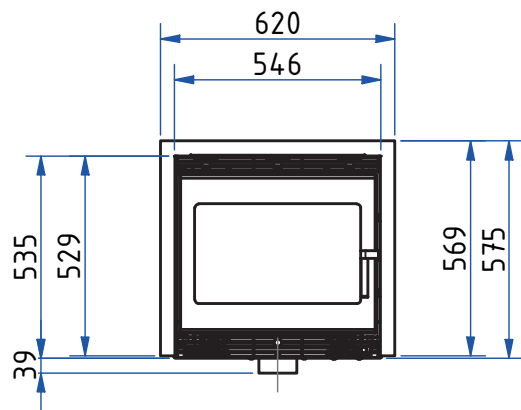
Top view, scale 1:20



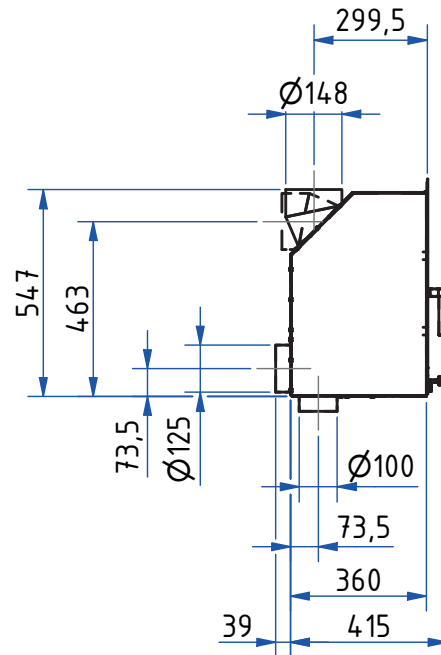
NEO-Line Kaso 550

Dimensional drawings with Frame 3-sided 40 mm

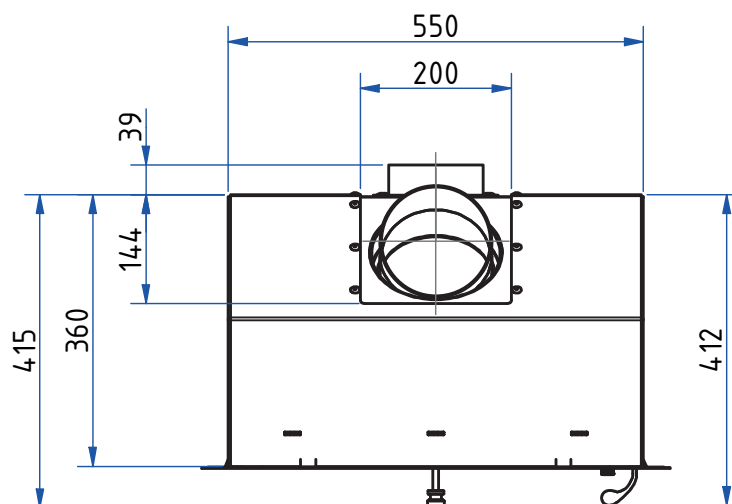
Front view, scale 1:20



Side view, scale 1:20



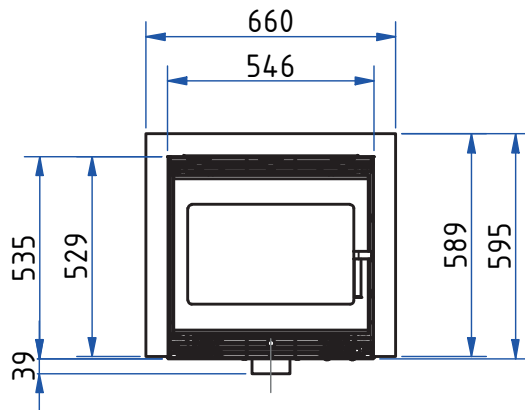
Rear view, scale 1:20



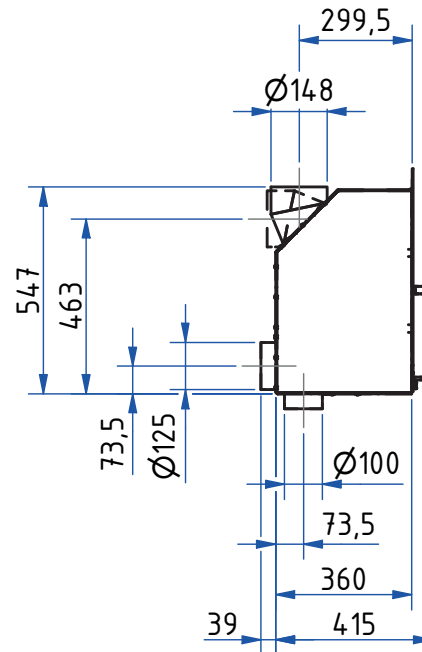
NEO-Line Kaso 550

Dimensional drawings with Frame 3-sided 60 mm

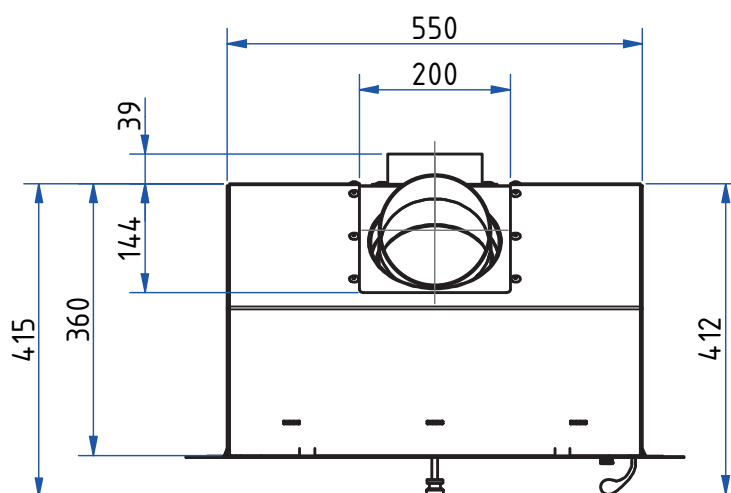
Front view, scale 1:20



Side view, scale 1:20



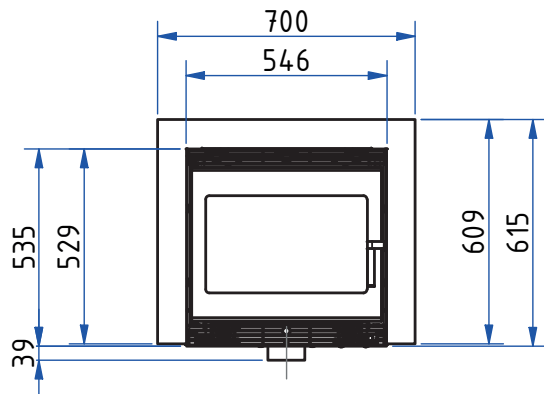
Rear view, scale 1:20



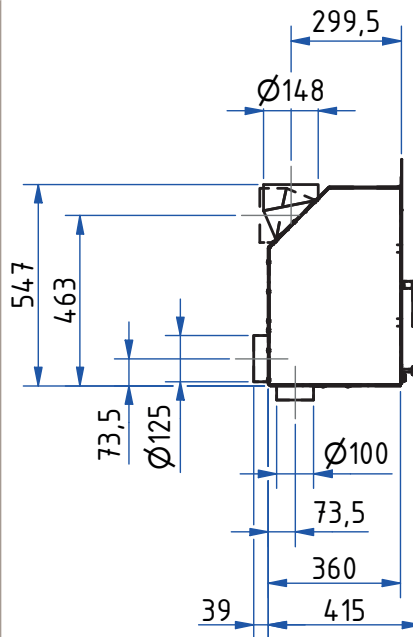
NEO-Line Kaso 550

Dimensional drawings with Frame 3-sided 80 mm

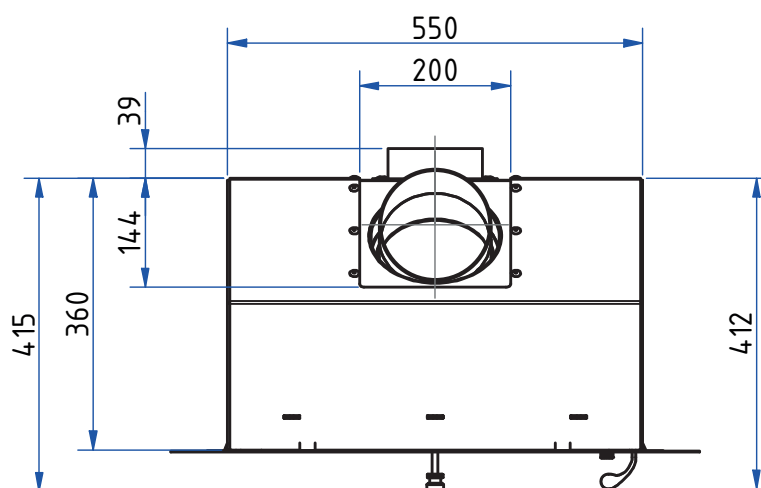
Front view, scale 1:20



Side view, scale 1:20

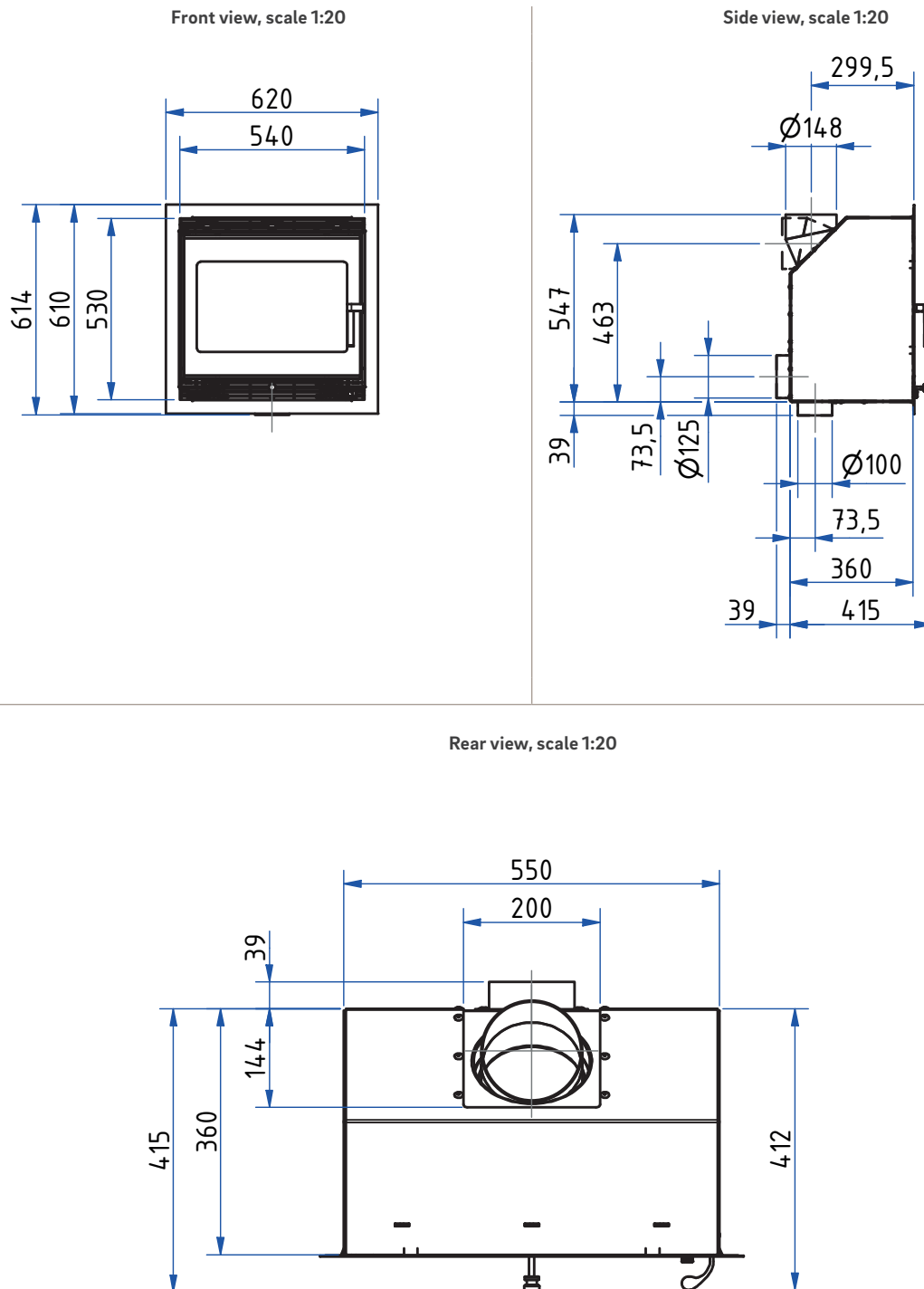


Rear view, scale 1:20



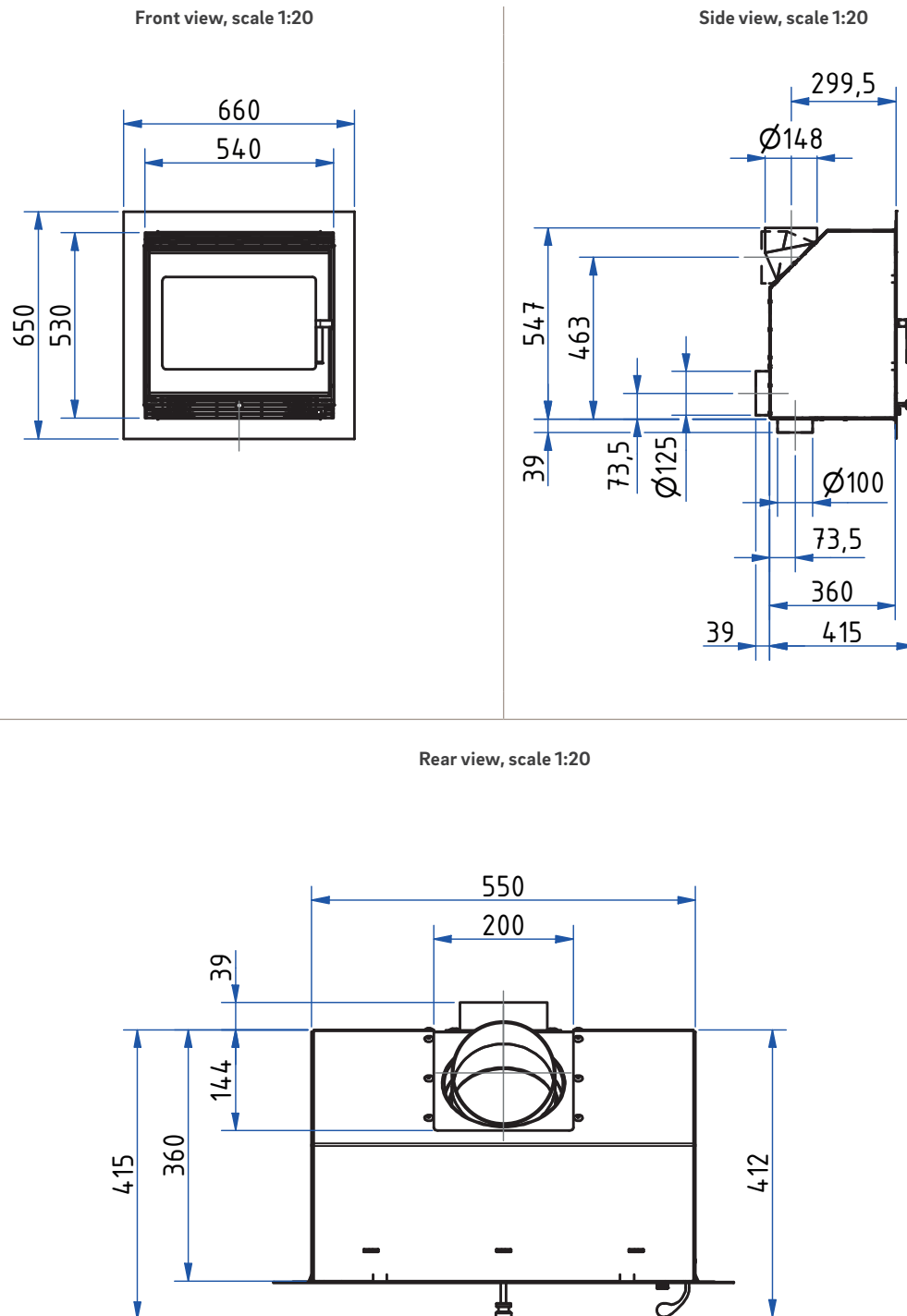
NEO-Line Kaso 550

Dimensional drawings with Frame 4-sided 40 mm



NEO-Line Kaso 550

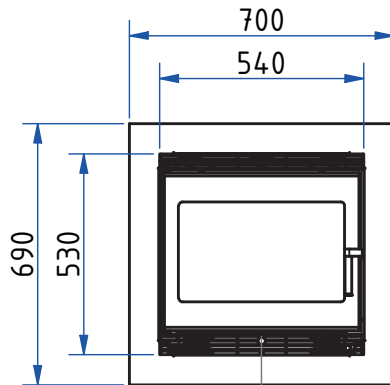
Dimensional drawings with Frame 4-sided 60 mm



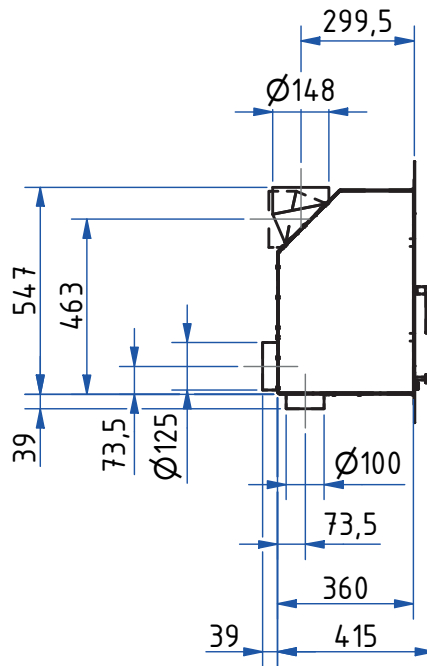
NEO-Line Kaso 550

Dimensional drawings with Frame 4-sided 80 mm

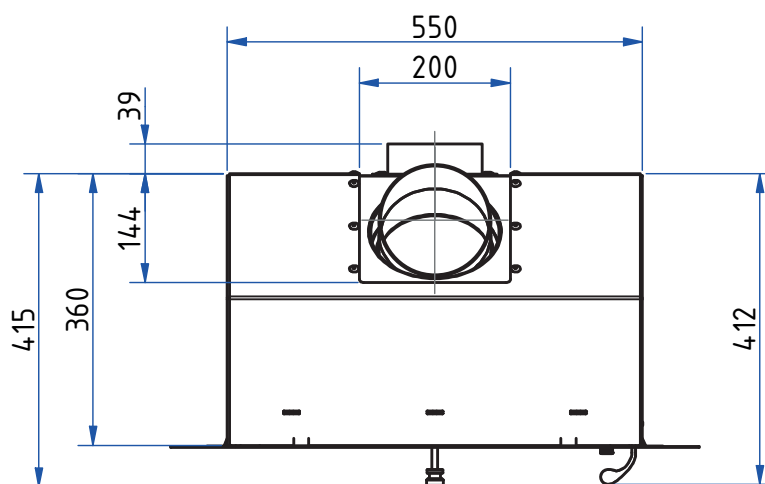
Front view, scale 1:20



Side view, scale 1:20



Rear view, scale 1:20



Product data sheet

Regulation (EU) 2015/1186 supplementing Directive 2010/30/EU

	NEO-Line Kaso 550
Supplier's name:	Camina & Schmid Feuerdesign und Technik GmbH & Co. KG
Supplier's model identifier:	NEO-Line Kaso 550
Energy efficiency class:	A
Direct heat output (kW)	4,9
Indirect heat output (kW):	–
Energy efficiency index (EEI):	106,9
Energy efficiency at nominal heat output (%):	80,6
Notes for specific precautions, installation or maintenance:	Please note the reference in the assembly instructions and operating manuals!

There may be modifications to technical details caused by ongoing developments; subject to errors and omissions. Dated: 01/2026

	NEO-Line Kaso 550
Room heat output (kW)	4,9
Partial load-thermal output (kW)	–
Partial load-room heat output (kW)	–
Efficiency partial load - thermal output (%)	–
Room heating annual efficiency at nominal heat output	70,6
CO - Emissions (13% O ₂) at nominal heat output (mg/m ³)	< 1250
NOX - Emissions (13% O ₂) at nominal heat output (mg/m ³)	< 200
OGC - Emissions (13% O ₂) at nominal heat output (mg/m ³)	< 120
Particles - Emissions (13% O ₂) at nominal heat output (mg/m ³)	< 40
Required delivery pressure at nominal heat output (Pa)	12
Required delivery pressure at partial load-thermal output (Pa)	–
Chimney designation according chimney standard	T 400
Suitable for continuous burning operation (CON) or part-time operation (INT)	INT
Minimum distance to combustible components based on TROL 2022	WDS 2 - WDS 4H
Maximum carrying capacity by chimney (kg)	100

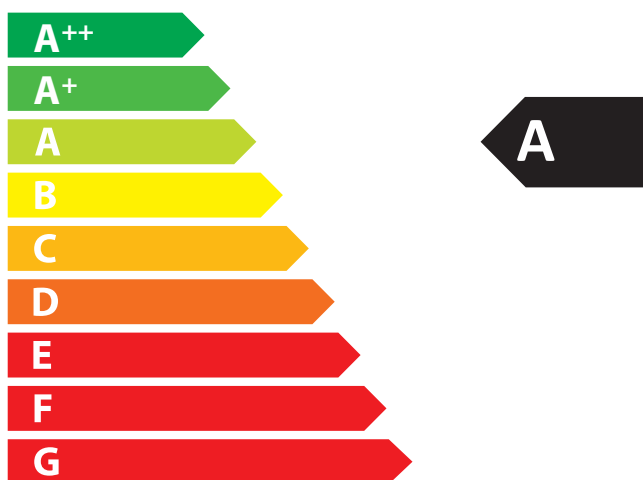
There may be modifications to technical details caused by ongoing developments; subject to errors and omissions. Dated: 01/2026

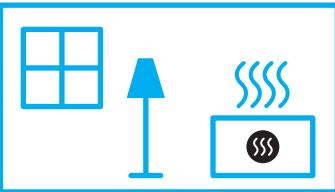


ENERG
енергия · ενέργεια



Camina  Schmid NEO-Line Kaso 550





4,9
kW

ENERGIA · ЕНЕРГИЯ · ΕΝΕΡΓΕΙΑ · ENERGIJA · ENERGY · ENERGIE · ENERGI

2015/1186