

Lina 67 h

Data sheet

Details

- Fireplace insert, open on one side
- 6751 – Height 51 cm
6757 – Height 57 cm
- Optional: Self-closing door
- Adjustable lower air washing
- Standard fire box inner lining: white smooth chamotte
- High-grade cast-iron dome, all parts can be moved, adjustable between 0 – 90°
- Overall height can be simply and quickly adjusted
- Easy to dismantle for transport

Technical data

Nominal heat output	9 kW
Thermal output range	3.2 – 10.9 kW
Efficiency	>78%
Insulation thickness (with wall that does not need to be protected) (based on SILCA® 250KM)	60 mm
Combustion air connector	Ø 125 mm
Recommend length of logs	33 cm
Weight	220 – 260 kg
Heat distribution through the viewing window	30%
Heat distribution, convective output	70%

Data for chimney sweep according to DIN EN 13384 (closed operation)

Triple values with nominal heat output

Flue gas mass flow	9.1 g/s
Flue gas temperature	320 °C
Required delivery pressure	12 Pa

Triple values for calculating ceramic flues (wood fuel)

Firing power	22.2 kW
Flue gas mass flow	15.9 g/s
Flue gas temperature upstream of the connecting surface	335 °C
Required delivery pressure at the flue gas connector	15 Pa
Combustion air requirement	88.8 m³/h
Recommended flue length ¹	3.5 m

Data for closed design

Minimum heat-emitting surface ²	4.2 m²
--	--------

¹The information regarding flue lengths is a recommendation and based on the calculation in accordance with TROL 2022 chapter 15. The calculation is based on a medium-heavy design and a flue ratio of 360 cm².

²Average value based on the storage time. Dependent on the material properties and the construction thickness. Mean specific heat distribution = approx. 500 W/m²

There may be modifications to the colour and technical details caused by ongoing developments; subject to errors and omissions. Dated: 08/2025



Lina 67 with guillotine front

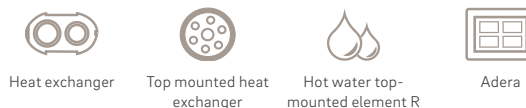
Standard



Optional



Accessories



Energy efficiency class in accordance with (EU) 2015/1186



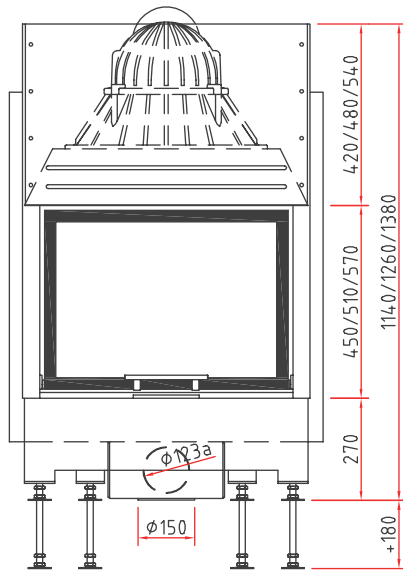
1. Federal Emissions Control Ordinance Stage 2



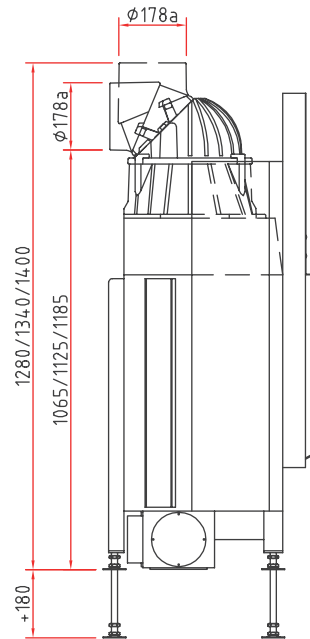
Lina 67 h

Dimensional drawing

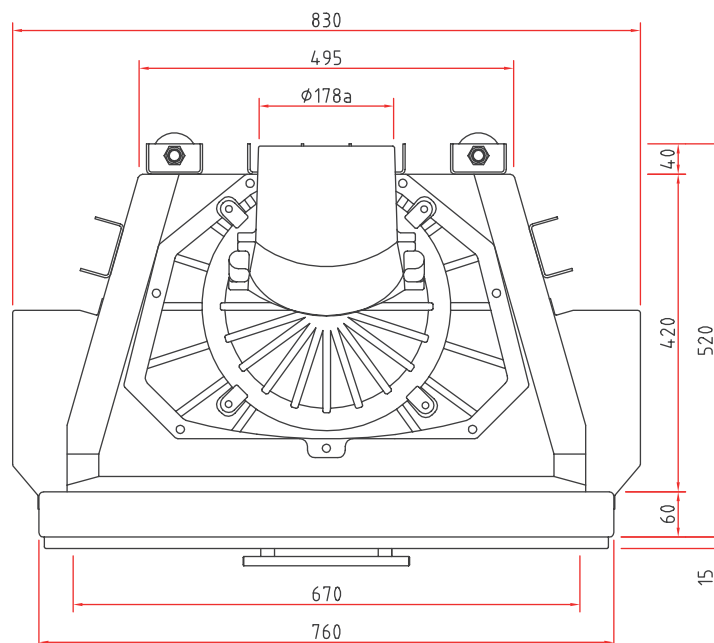
Front view, scale 1:20



Side view, scale 1:20



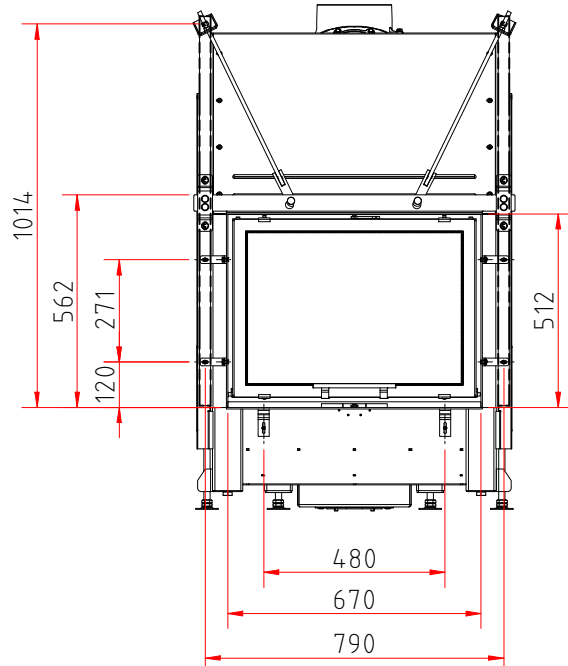
Top view, scale 1:10



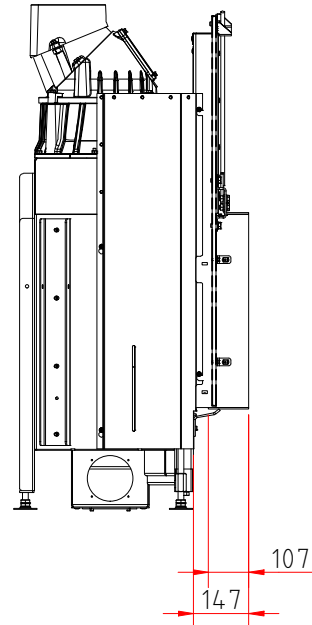
Lina 6751 h

Dimensional drawing with frame system

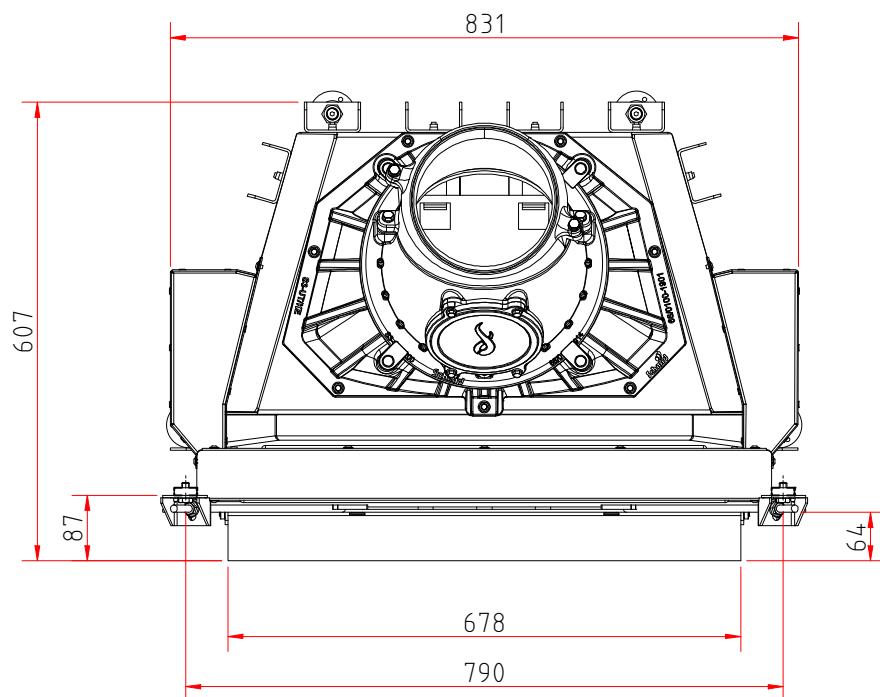
Front view, scale 1:20



Side view, scale 1:20



Top view, scale 1:10



Illustrations are similar. All photos and drawings are protected by copyright. Usage or publication, even of individual details, is only permitted with our authorisation. There may be modifications to the colour and technical details caused by ongoing developments; subject to errors and omissions. Dated: 12/2023

Product data sheet

Regulation (EU) 2015/1186 supplementing Directive 2010/30/EU

	Lina 67 s/h, Lina TV 67 s/h
Supplier's name:	Camina & Schmid Feuerdesign und Technik GmbH & Co. KG
Supplier's model identifier:	Lina 67 s/h, Lina TV 67 s/h
Energy efficiency class:	A
Direct heat output (kW)	9,0
Indirect heat output (kW):	–
Energy efficiency index (EEI):	103,4
Energy efficiency at nominal heat output (%):	78,2
Notes for specific precautions, installation or maintenance:	Please note the reference in the assembly instructions and operating manuals!

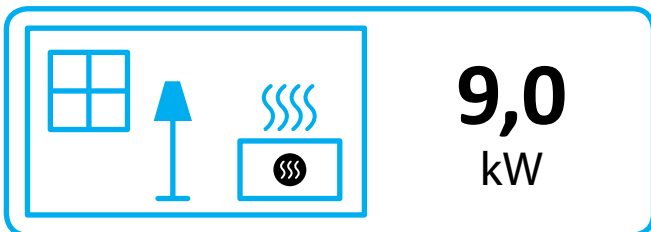
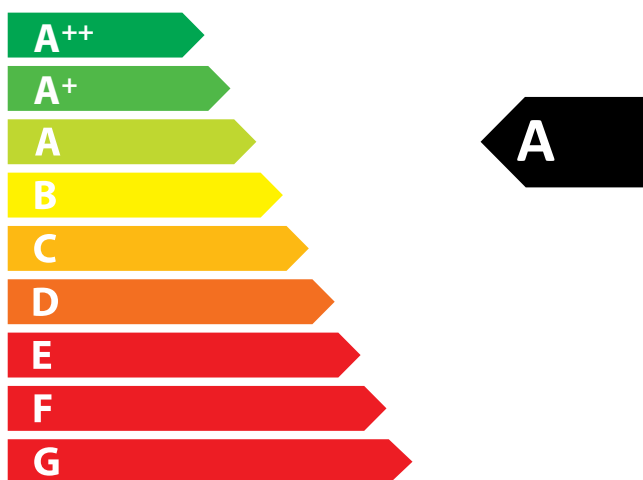
There may be modifications to technical details caused by ongoing developments; subject to errors and omissions. Dated: 11/2021



ENERG
енергия · ενέργεια



Camina  Schmid Lina 67 s/h, Lina TV 67 s/h



ENERGIA · ЕНЕРГИЯ · ΕΝΕΡΓΕΙΑ · ENERGIJA · ENERGY · ENERGIE · ENERGI

2015/1186