

Ekko U 55(67) h

Data sheet

Details

- Fireplace insert, open on three sides
- 55(67)51 – Height 51 cm
55(67)57 – Height 57 cm
- Optional: Self-closing door
- Adjustable lower air washing
- Standard fire box inner lining: white smooth chamotte
- High-grade cast-iron dome, all parts can be moved, adjustable between 0 – 90°

Technical data

• Nominal heat output	9 kW
• Thermal output range	4,3 – 9,1 kW
• Efficiency	>78 %
• Insulation thickness (with wall that does not need to be protected) (based on SILCA® 250KM)	60 mm
• Combustion air connector	Ø 125 mm
• Recommend length of logs	33 cm
• Weight	250 – 260 kg
• Heat distribution through the viewing window	70 %
• Heat distribution, convective output	30 %

Data for chimney sweep according to DIN EN 13384 (closed operation)

Triple values with nominal heat output

• Flue gas mass flow	8,6 g/s
• Flue gas temperature	310 °C
• Required delivery pressure	11,5 Pa

Triple values for calculating ceramic flues (wood fuel)

• Firing power	24,4 kW
• Flue gas mass flow	17,4 g/s
• Flue gas temperature upstream of the connecting surface	361 °C
• Required delivery pressure at the flue gas connector	15 Pa
• Combustion air requirement	97,5 m³/h
• Recommended flue length ¹	1,7 m

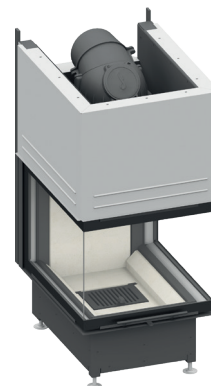
Data for closed design

• Minimum heat-emitting surface ²	3,5 m²
--	--------

¹The information regarding flue lengths is a recommendation and based on the calculation in accordance with TROL 2022 chapter 15. The calculation is based on a medium-heavy design and a flue ratio of 360 cm².

²Average value based on the storage time. Dependent on the material properties and the construction thickness. Mean specific heat distribution = approx. 500 W/m²

There may be modifications to the colour and technical details caused by ongoing developments; subject to errors and omissions. Dated: 08/2025



Ekko U 55(67)51 with guillotine front

Standard



Anthracite front



Kristall front
(51 cm high only)



Guillotine door



125 mm
Combustion air
connector

Optional



Frame



Support frame
system



150 mm
Combustion air
connector

Accessories



Adera



Energy efficiency
class in accordance
with (EU) 2015/1186

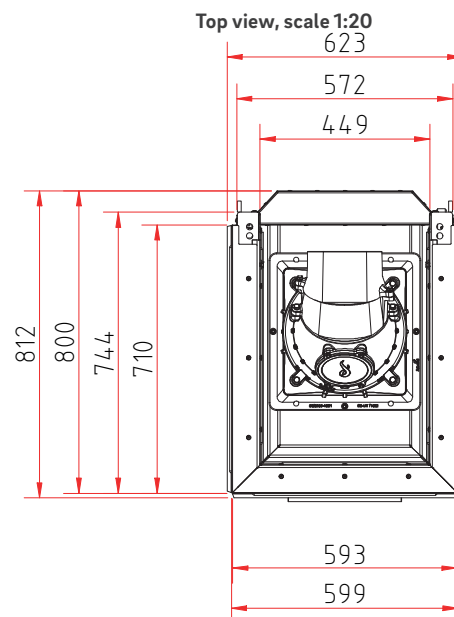
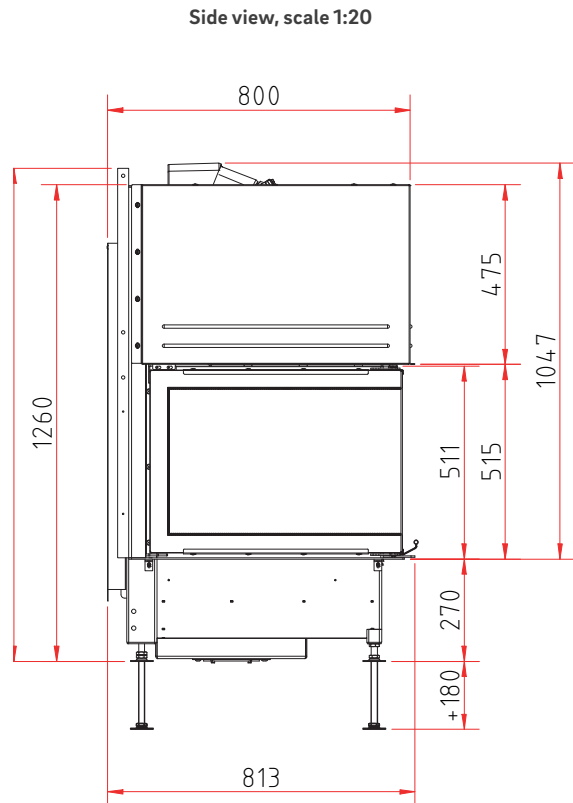
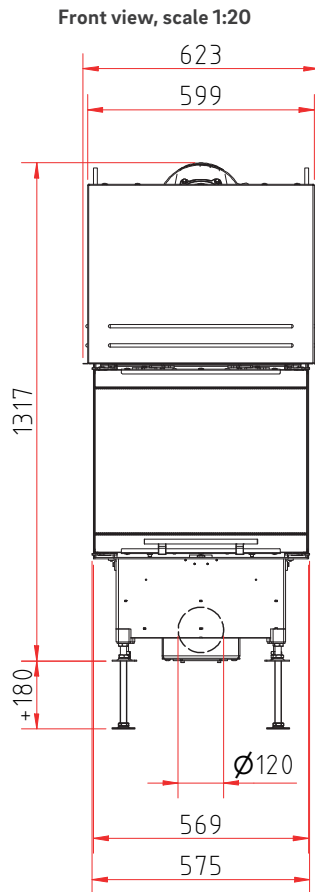


1. Federal Emissions
Control Ordinance
Stage 2



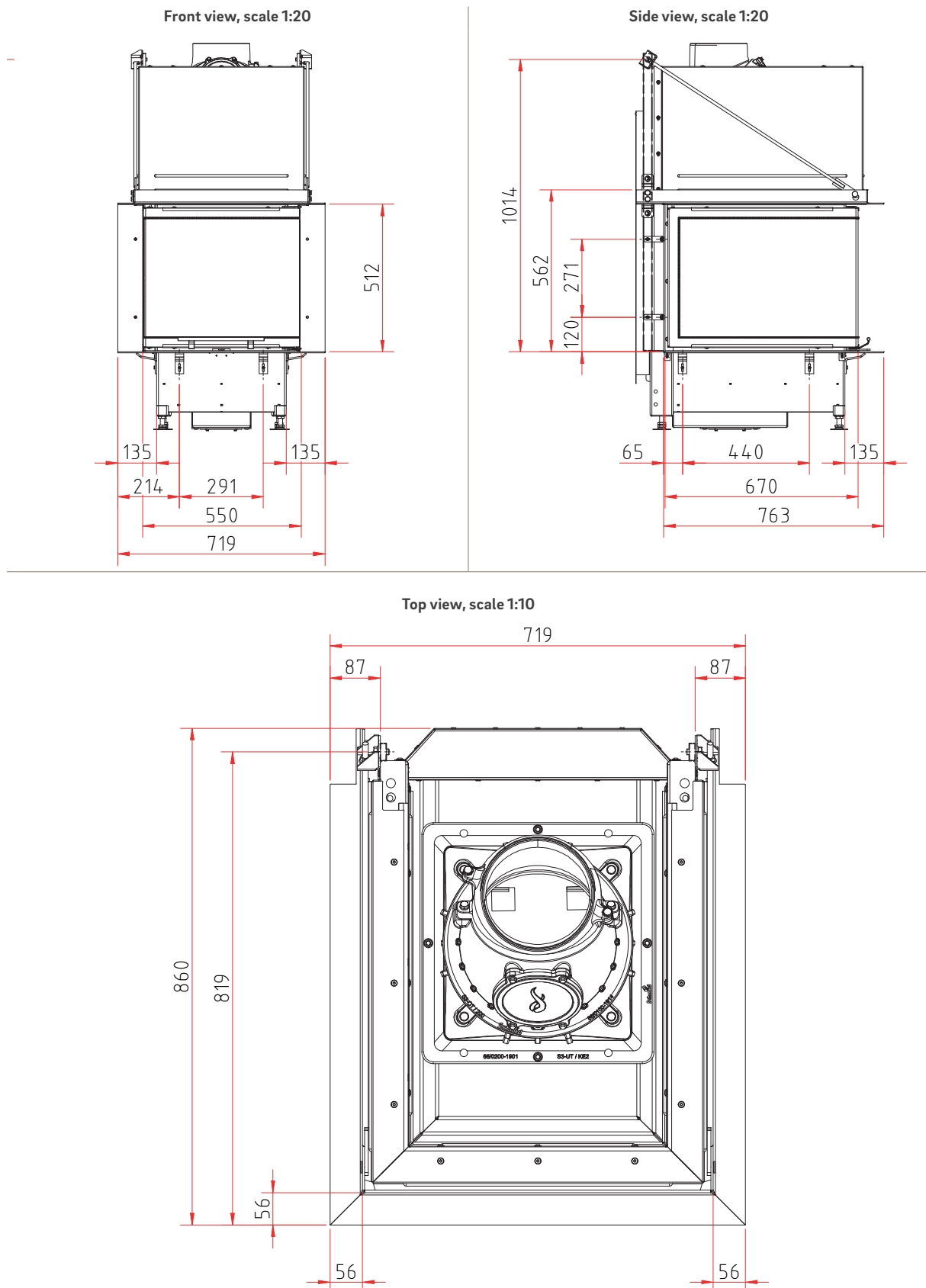
Ekko U 55(67)51 h

Dimensional drawing



Ekko U 55(67)51 h

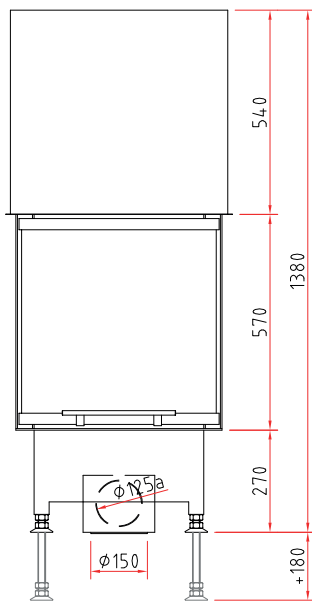
Dimensional drawing with frame system



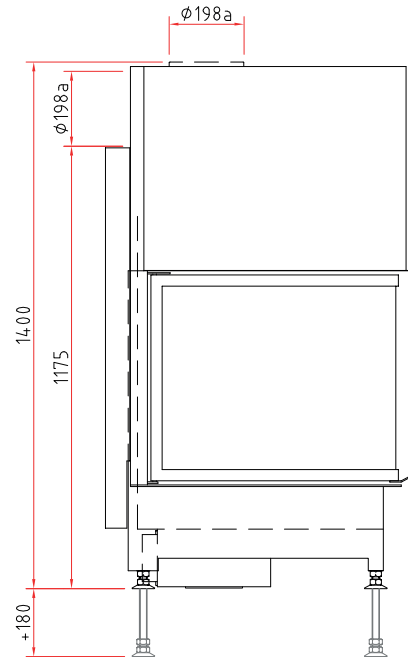
Ekko U 55(67)57 h

Dimensional drawing

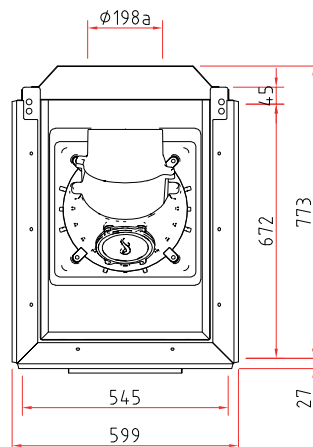
Front view, scale 1:20



Side view, scale 1:20



Top view, scale 1:20



Product data sheet

Regulation (EU) 2015/1186 supplementing Directive 2010/30/EU

	Ekko U 55(67) h
Supplier's name:	Camina & Schmid Feuerdesign und Technik GmbH & Co. KG
Supplier's model identifier:	Ekko U 55(67) h
Energy efficiency class:	A
Direct heat output (kW)	9,0
Indirect heat output (kW):	–
Energy efficiency index (EEI):	104,1
Energy efficiency at nominal heat output (%):	78,7
Notes for specific precautions, installation or maintenance:	Please note the reference in the assembly instructions and operating manuals!

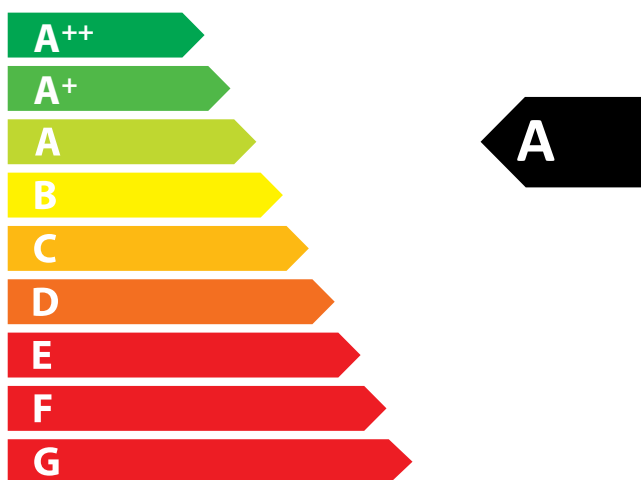
There may be modifications to technical details caused by ongoing developments; subject to errors and omissions. Dated: 11/2021

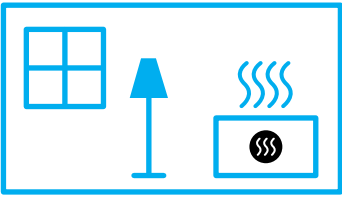


ENERG
енергия · ενέργεια



Camina  Schmid Ekko U 55(67) h





9,0
kW

ENERGIA · ЕНЕРГИЯ · ΕΝΕΡΓΕΙΑ · ENERGIJA · ENERGY · ENERGIE · ENERGI

2015/1186