

Ekko L 67(45)h evo

Data sheet

Details

- Fireplace insert, open on two sides
- 67(45)51 – Height 51 cm
67(45)57 – Height 57 cm
- Guillotine door, not supplied selfclosing from the factory
- Glass: 2-section
- Air module with Primary air shutdown
- Integrated flame correction for a straight flame
- Adjustable feet adjustable in height (manually/allen key)
- High-grade cast-iron dome, all parts can be moved, adjustable between 0 – 90°

Standard

- Kristall front
- Combustion air connector 125 mm

Optional

- Inner lining: chamotte white, anthracite and cast iron anthracite
- Selfclosing door
- Combustion air connector 150 mm
- Frames
- Frame system
- Support panel

Accessories

- Hot water topmounted element
- External fuel-door
- Heat exchanger
- Top mounted heat exchanger
- Catalyst plates
- Auxiliary air mechanism
- Storage system SET 1
- Storage system SET 2
- Storage system SET 3
- Adera
- Safety controller
- Support frame
- Base frame



Ekko L 67(45)51 h evo with Chamotte white



Ekko L 67(45)51 h evo with Chamotte anthracite



Ekko L 67(45)51 h evo with BRS and Cast iron anthracite



Energy efficiency
class in accordance
with (EU) 2015/1186



1. Federal Emissions
Control Ordinance
Stage 2



There may be modifications to the colour and technical details caused by ongoing developments; subject to errors and omissions. Dated: 08/2025

Ekko L 67(45)h evo

Data sheet

Technical data

• Nominal heat output	9 kW
• Thermal output range	3,2 – 10 kW
• Efficiency	>80 %
• Insulation thickness (with a wall that does not need to be protected, based on TROL 2022, Reference insulation material)	80 mm
• Insulation thickness (Combustible components based on TROL 2022)	WDS 2 - WDS 4 H
• Combustion air connector	Ø 125 mm
• Type of combustion air supply	VL _{Room} , VL _{External}
• Recommended length of logs	33 cm
• Weight	220–260 kg
• Heat distribution through the viewing window	50 %
• Heat distribution: convective output	50 %
• Recommended free cross-section ¹	Supply air 1080 cm ² Recirculation air 900 cm ²

Data for chimney sweep according to DIN EN 13384 (closed operation)

Triple values with nominal heat output

• Flue gas mass flow	9,6 g/s
• Flue gas temperature	287 °C
• Required delivery pressure	12 Pa

Triple values for calculating ceramic flues (wood fuel)

• Firing power	23,3 kW
• Flue gas mass flow	16,7 g/s
• Flue gas temperature upstream of the connecting surface	329 °C
• Required delivery pressure at the flue gas connector	15 Pa
• Combustion air requirement ²	93,3 m ³ /h
• Recommended flue length ³	3,5 m
• Fuel conversion	5,6 kg/h

Data for closed design

• Minimum heat-emitting surface ⁴	3,7 m ²
--	--------------------

¹ The calculation was calculated according to TROL 2022 - Chapter 7.2.3.1 Supply and recirculation air cross sections. Free cross section in cm² for grid or breakthrough tile based on the heat output for air heating. Supply air grille 240 cm²/kW, recirculation air grille 200 cm²/kW. The calculated values may be exceeded or fallen short of by up to 20%.

² When connected directly to the outside air, combustion is not dependent on the direct ambient air.

³ The information regarding flue lengths is a recommendation and based on the calculation in accordance with TROL 2022 chapter 15. The calculation is based on a medium-heavy design and a flue ratio of 360 cm².

⁴ Average value based on the storage time. Dependent on the material properties and the construction thickness. Mean specific heat distribution = approx. 500 W / m²

There may be modifications to the colour and technical details caused by ongoing developments; subject to errors and omissions. Dated: 08/2025



Energy efficiency class in accordance with (EU) 2015/1186

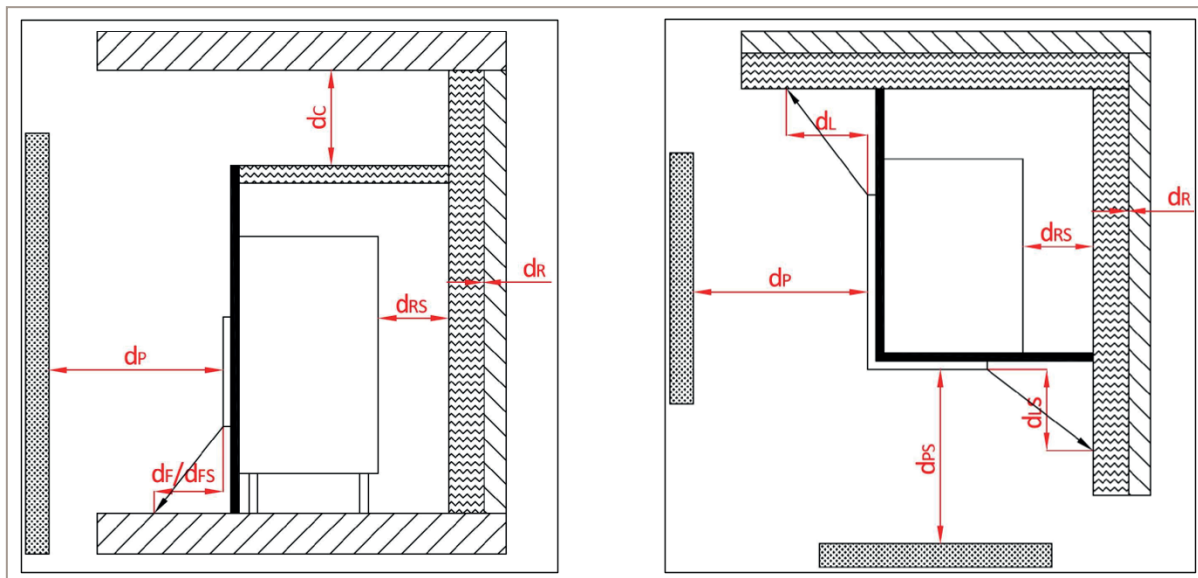


1. Federal Emissions Control Ordinance Stage 2



Ekko L 67(45)h evo

Side radiation area convective hot air

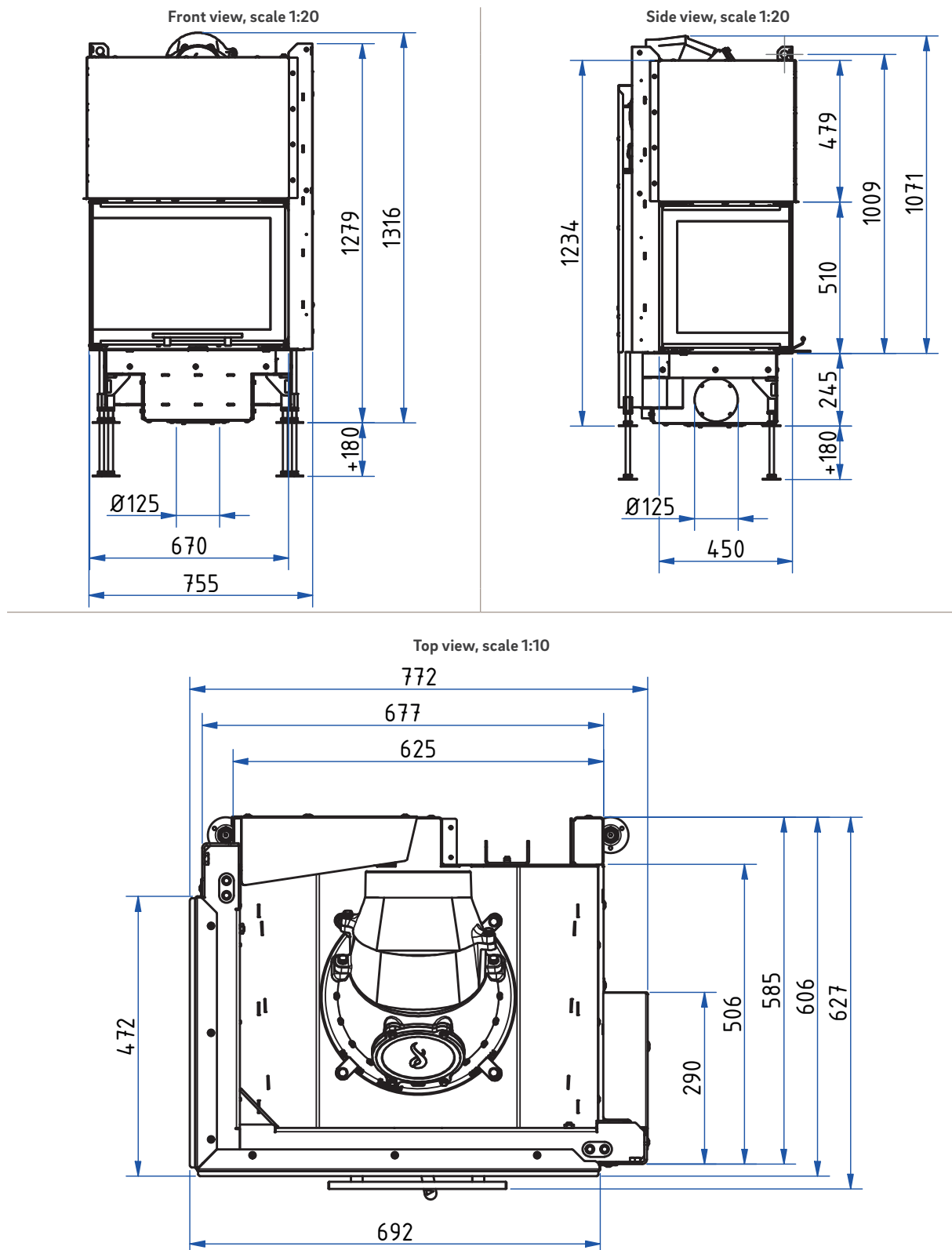


View from the side and from above

Minimum distance to combustible materials:	Abbr.	Fireplace inserts:
		Ekko L/R 67(45) s/h evo
ceiling	d_c	750 mm
rear and side (between the insulation and the test wall)	d_r	0 mm
rear and side (between the insulation and the insert)	d_{rs}	100 mm
side radiation area front glass	d_L	600 mm
side radiation area side glass	d_{LS}	0 mm
to adjacent combustible materials front glass	d_p	1050 mm
to adjacent combustible materials side glass	d_{PS}	800 mm
distance on the floor to the front	d_F	0 mm
distance on the floor to the side	d_{FS}	0 mm

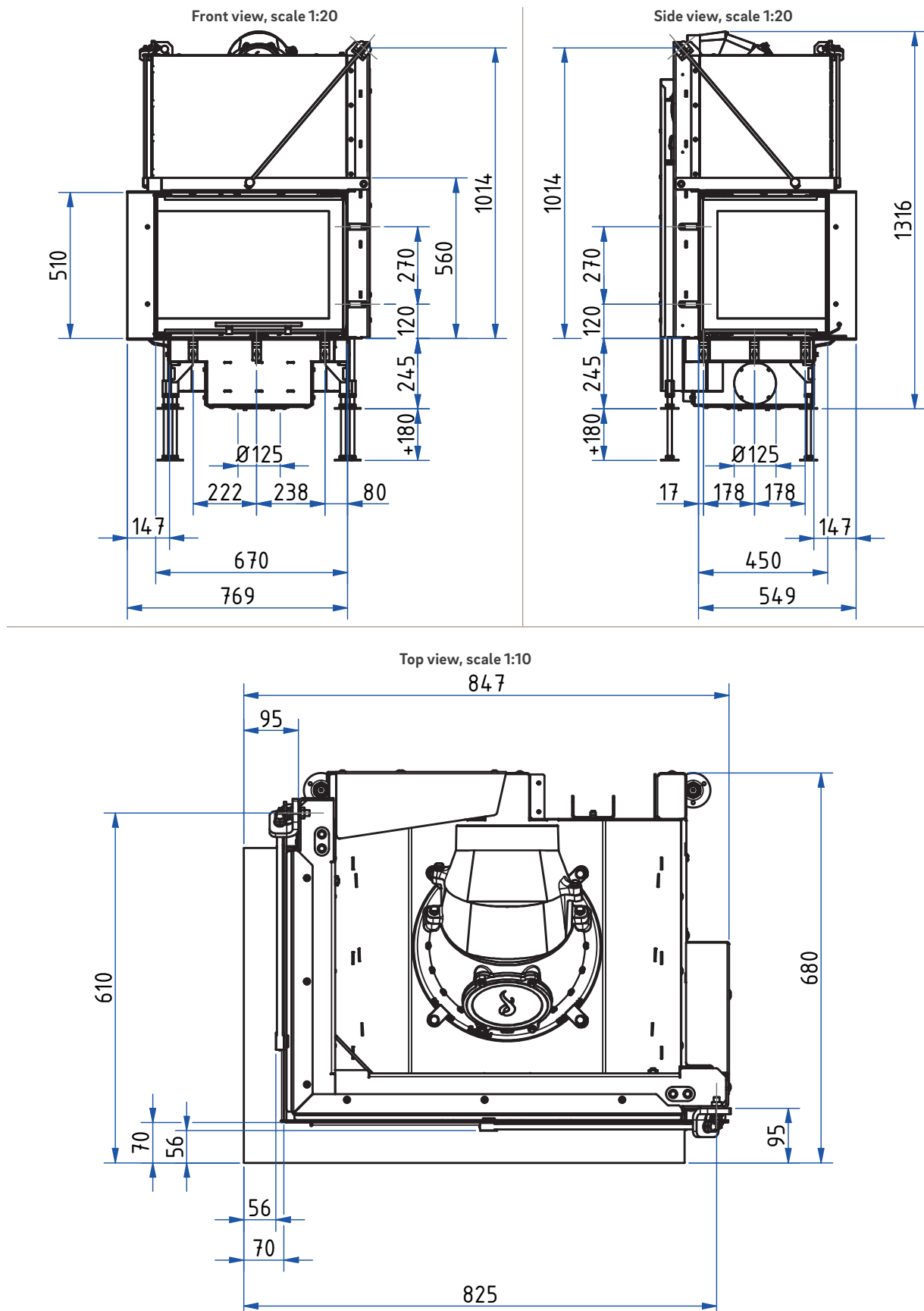
Ekko L 67(45)51 h evo

Dimensional drawing



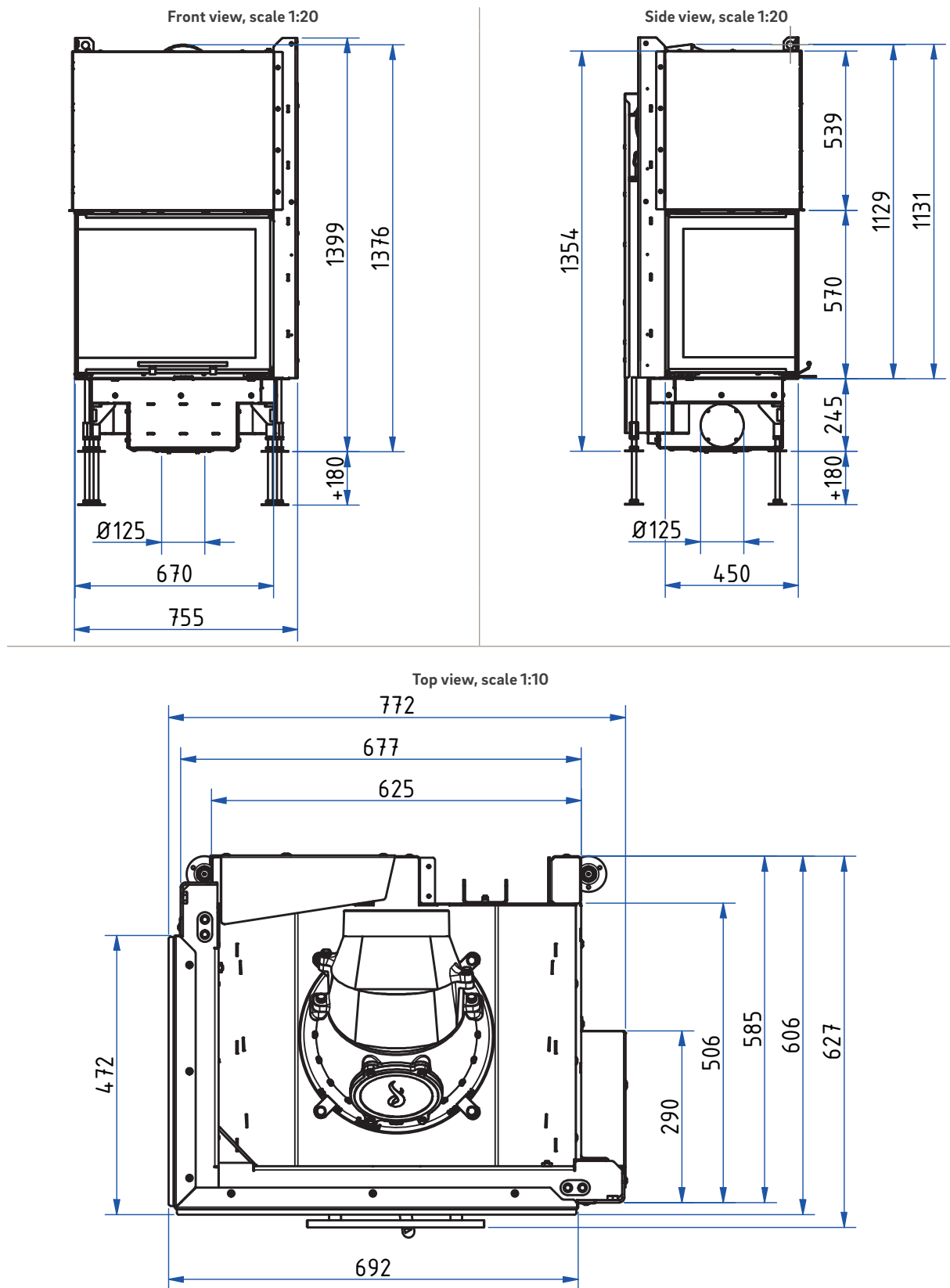
Ekko L 67(45)51 h evo

Dimensional drawing with frame system



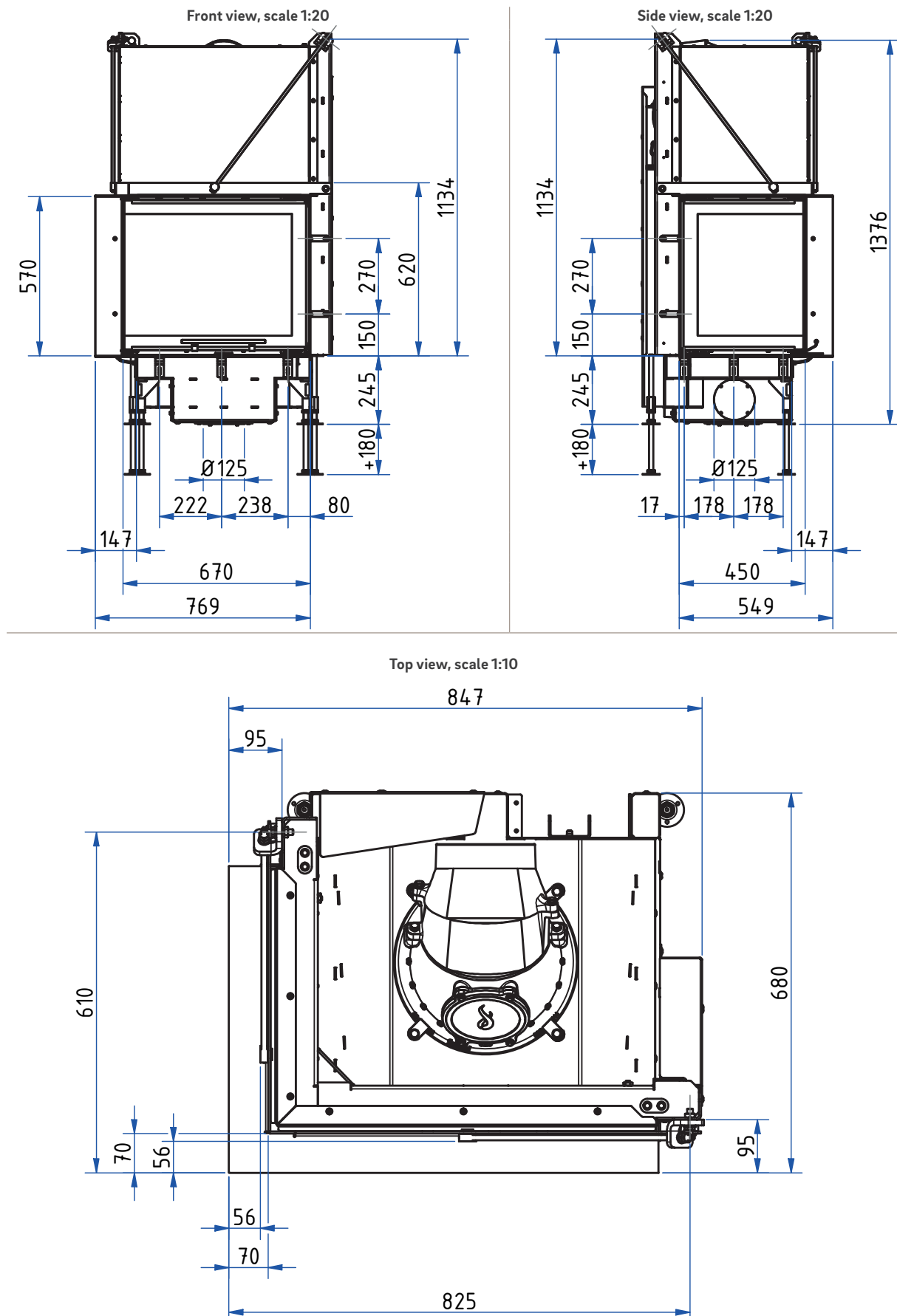
Ekko L 67(45)57 h evo

Dimensional drawing



Ekko L 67(45)57 h evo

Dimensional drawing with frame system



Product data sheet

Regulation (EU) 2015/1186 supplementing Directive 2010/30/EU

	Ekko L/R 67(45) evo
Supplier's name:	Camina & Schmid Feuerdesign und Technik GmbH & Co. KG
Supplier's model identifier:	Ekko L/R 67(45) evo
Energy efficiency class:	A
Direct heat output (kW)	9,0
Indirect heat output (kW):	–
Energy efficiency index (EEI):	106,0
Energy efficiency at nominal heat output (%):	80,0
Notes for specific precautions, installation or maintenance:	Please note the reference in the assembly instructions and operating manuals!

There may be modifications to technical details caused by ongoing developments; subject to errors and omissions. Dated: 08/2025


	Ekko L/R 67(45) evo
Room heat output (kW)	9,0
Partial load-thermal output (kW)	–
Partial load-room heat output (kW)	–
Efficiency partial load - thermal output (%)	–
Room heating annual efficiency at nominal heat output	70,0
CO - Emissions (13% O ₂) at nominal heat output (mg/m ³)	< 1250
NOX - Emissions (13% O ₂) at nominal heat output (mg/m ³)	< 200
OGC - Emissions (13% O ₂) at nominal heat output (mg/m ³)	< 120
Particles - Emissions (13% O ₂) at nominal heat output (mg/m ³)	< 40
Required delivery pressure at nominal heat output (Pa)	12
Required delivery pressure at partial load-thermal output (Pa)	–
Chimney designation according chimney standard	T 400
Suitable for continuous burning operation (CON) or part-time operation (INT)	INT
Minimum distance to combustible components based on TROL 2022	WDS 2 - WDS 4H
Maximum carrying capacity by chimney (kg)	100

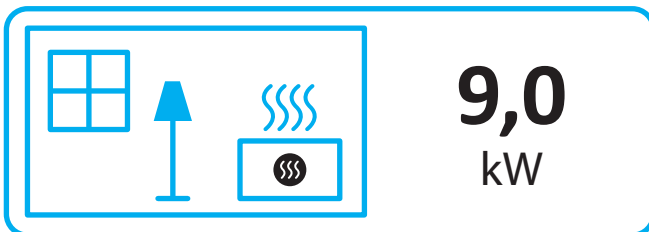
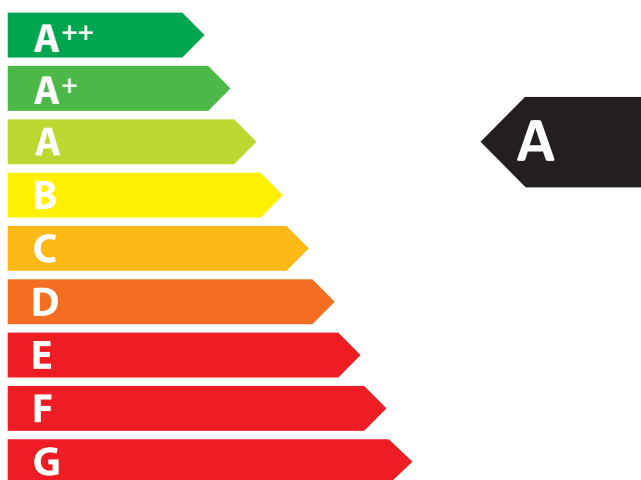
There may be modifications to technical details caused by ongoing developments; subject to errors and omissions. Dated: 08/2025



ENERG
енергия · ενέργεια



Camina  Schmid Ekko L/R 67(45) evo



ENERGIA · ЕНЕРГИЯ · ΕΝΕΡΓΕΙΑ · ENERGIJA · ENERGY · ENERGIE · ENERGI

2015/1186