

# Ekko L 67(34) s evo

## Data sheet

### Details

- Fireplace insert, open on two sides
- 67(34)51 – Height 51 cm  
67(34)57 – Height 57 cm
- Hinged door, self-closing
- Glass: 2-section
- Air module with Primary air shutdown
- Integrated flame correction for a straight flame
- Adjustable feet adjustable in height (manually/allen key)
- High-grade cast-iron dome, all parts can be moved, adjustable between 0 – 90°

### Standard

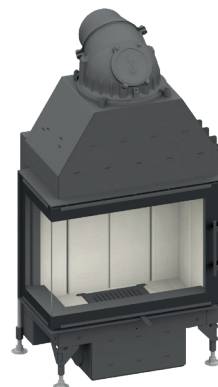
- Kristall front
- Combustion air connector 125 mm

### Optional

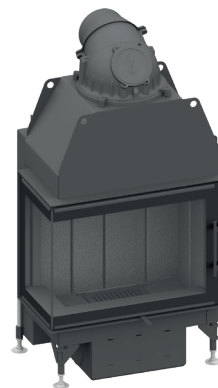
- Inner lining: chamotte white, anthracite and cast iron anthracite
- Combustion air connector 150 mm
- Frames

### Accessories

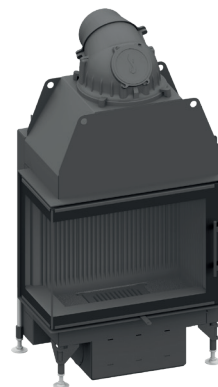
- Hot water topmounted element
- External fuel-door
- Heat exchanger
- Top mounted heat exchanger
- Catalyst plates
- Auxiliary air mechanism
- Storage system SET 1
- Storage system SET 2
- Storage system SET 3
- Adera
- Safety controller
- Support frame



Ekko L 67(34)51 s evo with Chamotte white



Ekko L 67(34)51 s evo with Chamotte anthracite



Ekko L 67(34)51 s evo with Cast iron anthracite



Energy efficiency  
class in accordance  
with (EU) 2015/1186



1. Federal Emissions  
Control Ordinance  
Stage 2



There may be modifications to the colour and technical details caused by ongoing developments; subject to errors and omissions. Dated: 08/2025

# Ekko L 67(34) s evo

## Data sheet

### Technical data

• Nominal heat output	7,5 kW
• Thermal output range	3,4 – 7,8 kW
• Efficiency	>80 %
• Insulation thickness (with a wall that does not need to be protected, based on TROL 2022, Reference insulation material)	80 mm
• Insulation thickness (Combustible components based on TROL 2022)	WDS 2 - WDS 4 H
• Combustion air connector	Ø 125 mm
• Type of combustion air supply	VL <sub>Room</sub> , VL <sub>External</sub>
• Recommended length of logs	33 cm
• Weight	215 kg
• Heat distribution through the viewing window	50 %
• Heat distribution: convective output	50 %
• Recommended free cross-section <sup>1</sup>	Supply air 840 cm <sup>2</sup> Recirculation air 700 cm <sup>2</sup>

**Data for chimney sweep** according to DIN EN 13384 (closed operation)

### Triple values with nominal heat output

• Flue gas mass flow	9,4 g/s
• Flue gas temperature	244 °C
• Required delivery pressure	12 Pa

### Triple values for calculating ceramic flues (wood fuel)

• Firing power	22,2 kW
• Flue gas mass flow	15,9 g/s
• Flue gas temperature upstream of the connecting surface	378 °C
• Required delivery pressure at the flue gas connector	15 Pa
• Combustion air requirement <sup>2</sup>	88,8 m <sup>3</sup> /h
• Recommended flue length <sup>3</sup>	1,8 m
• Fuel conversion	5,3 kg/h

### Data for closed design

• Minimum heat-emitting surface <sup>4</sup>	3,0 m <sup>2</sup>
--	--------------------

<sup>1</sup> The calculation was calculated according to TROL 2022 - Chapter 7.2.3.1 Supply and recirculation air cross sections. Free cross section in cm<sup>2</sup> for grid or breakthrough tile based on the heat output for air heating. Supply air grille 240 cm<sup>2</sup>/kW, recirculation air grille 200 cm<sup>2</sup>/kW. The calculated values may be exceeded or fallen short of by up to 20%.

<sup>2</sup> When connected directly to the outside air, combustion is not dependent on the direct ambient air.

<sup>3</sup> The information regarding flue lengths is a recommendation and based on the calculation in accordance with TROL 2022 chapter 15. The calculation is based on a medium-heavy design and a flue ratio of 360 cm<sup>2</sup>.

<sup>4</sup> Average value based on the storage time. Dependent on the material properties and the construction thickness. Mean specific heat distribution = approx. 500 W / m<sup>2</sup>

There may be modifications to the colour and technical details caused by ongoing developments; subject to errors and omissions. Dated: 08/2025



Energy efficiency class in accordance with (EU) 2015/1186

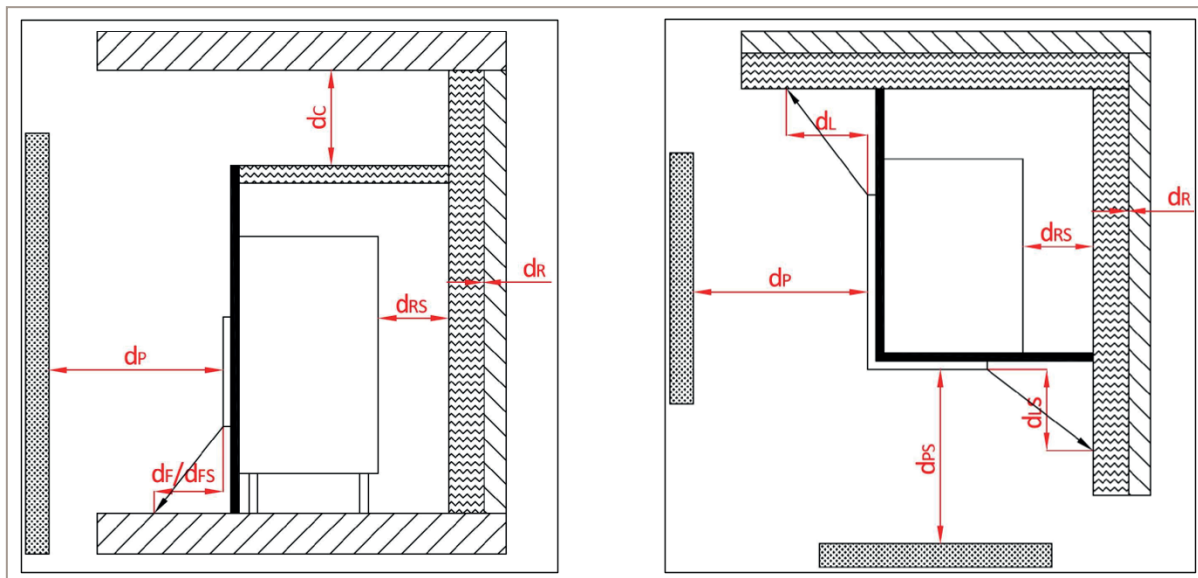


1. Federal Emissions Control Ordinance Stage 2



# Ekko L 67(34) s evo

Side radiation area convective hot air



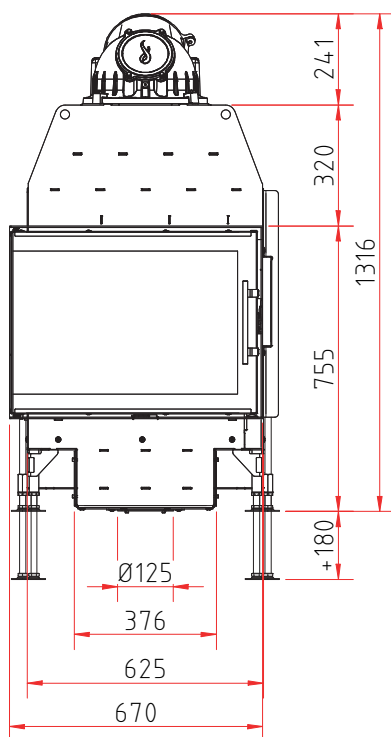
View from the side and from above

Minimum distance to combustible materials:	Abbr.	Fireplace inserts:
		Ekko L/R 67(34) s/h evo
ceiling	$d_c$	> 750 mm
rear and side (between the insulation and the test wall)	$d_r$	0 mm
rear and side (between the insulation and the insert)	$d_{rs}$	70 mm
side radiation area front glass	$d_L$	530 mm
side radiation area side glass	$d_{LS}$	0 mm
to adjacent combustible materials front glass	$d_p$	1100 mm
to adjacent combustible materials side glass	$d_{pS}$	800 mm
distance on the floor to the front	$d_F$	0 mm
distance on the floor to the side	$d_{FS}$	0 mm

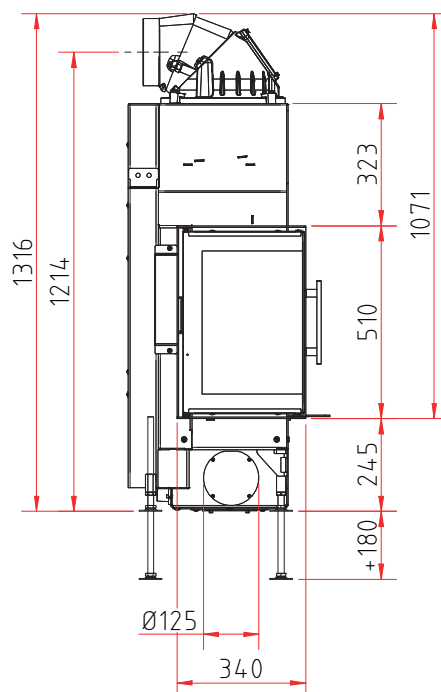
# Ekko L 67(34)51 s evo

## Dimensional drawing

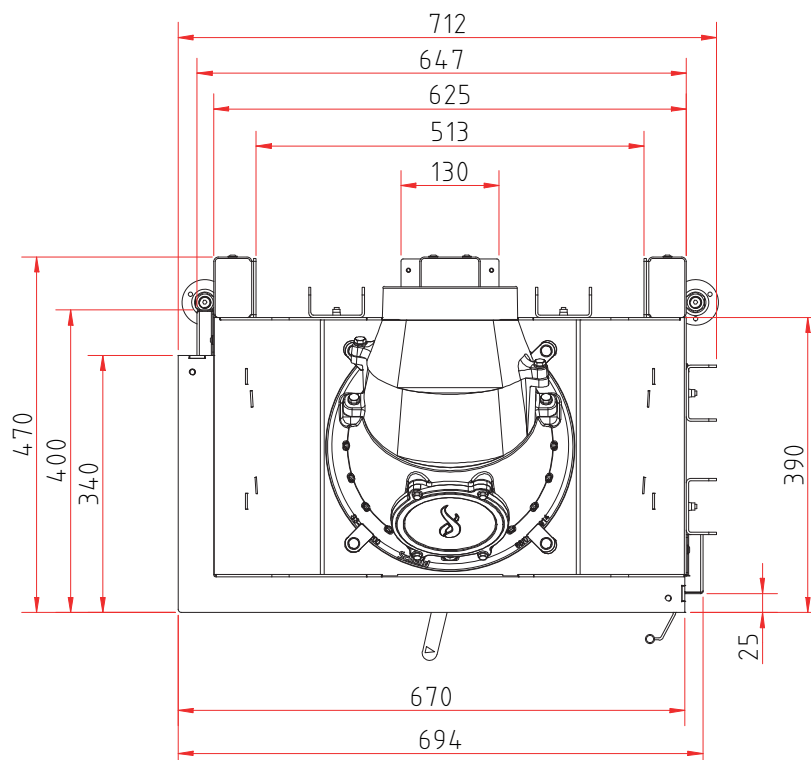
Front view, scale 1:20



Side view, scale 1:20



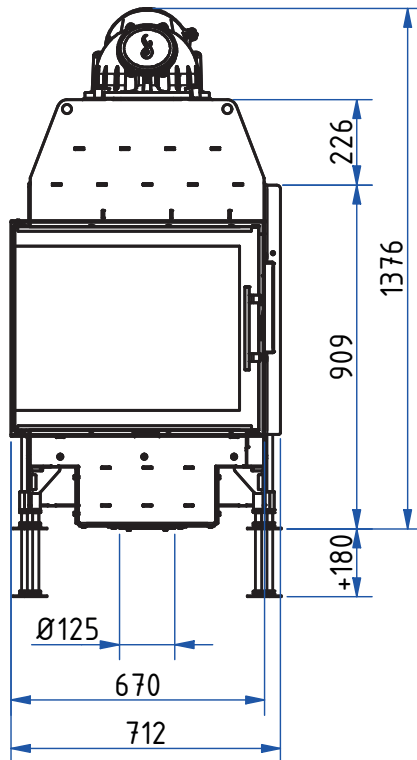
Top view, scale 1:10



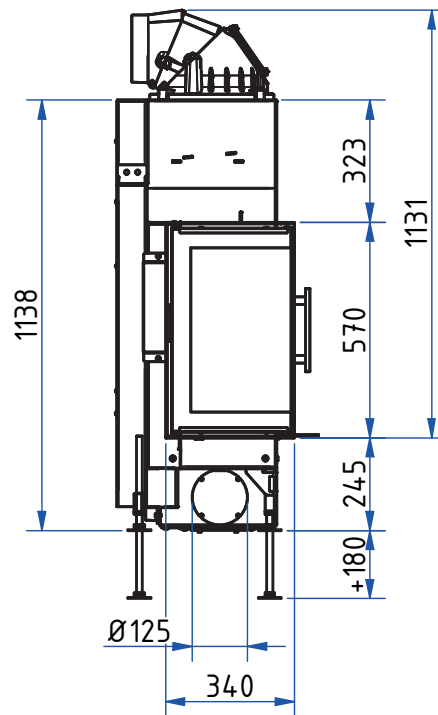
# Ekko L 67(34)57 s evo

## Dimensional drawing

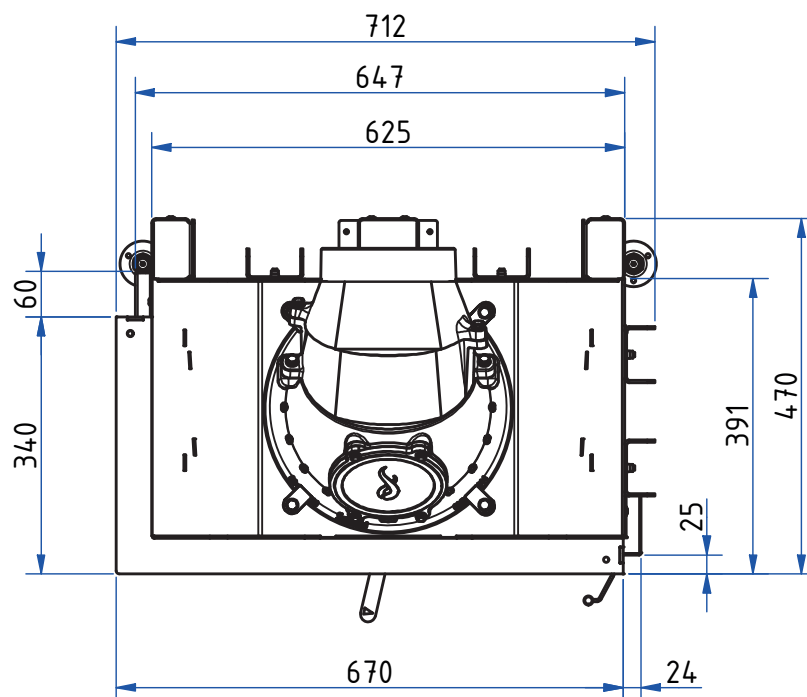
Front view, scale 1:20



Side view, scale 1:20



Top view, scale 1:10



## Product data sheet

Regulation (EU) 2015/1186 supplementing Directive 2010/30/EU

	Ekko L/R 67(34) evo
Supplier's name:	Camina & Schmid Feuerdesign und Technik GmbH & Co. KG
Supplier's model identifier:	Ekko L/R 67(34) evo
Energy efficiency class:	A+
Direct heat output (kW)	7,5
Indirect heat output (kW):	–
Energy efficiency index (EEI):	107,5
Energy efficiency at nominal heat output (%):	81,0
Notes for specific precautions, installation or maintenance:	Please note the reference in the assembly instructions and operating manuals!

There may be modifications to technical details caused by ongoing developments; subject to errors and omissions. Dated: 12/2024


	Ekko L/R 67(34) evo
Room heat output (kW)	7,5
Partial load-thermal output (kW)	–
Partial load-room heat output (kW)	–
Efficiency partial load - thermal output (%)	–
Room heating annual efficiency at nominal heat output	71
CO - Emissions (13% O <sub>2</sub> ) at nominal heat output (mg/m <sup>3</sup> )	< 1250
NOX - Emissions (13% O <sub>2</sub> ) at nominal heat output (mg/m <sup>3</sup> )	< 200
OGC - Emissions (13% O <sub>2</sub> ) at nominal heat output (mg/m <sup>3</sup> )	< 120
Particles - Emissions (13% O <sub>2</sub> ) at nominal heat output (mg/m <sup>3</sup> )	< 40
Required delivery pressure at nominal heat output (Pa)	12
Required delivery pressure at partial load-thermal output (Pa)	–
Chimney designation according chimney standard	T 400
Suitable for continuous burning operation (CON) or part-time operation (INT)	INT
Minimum distance to combustible components based on TROL 2022	WDS 2 - WDS 4H
Maximum carrying capacity by chimney (kg)	100

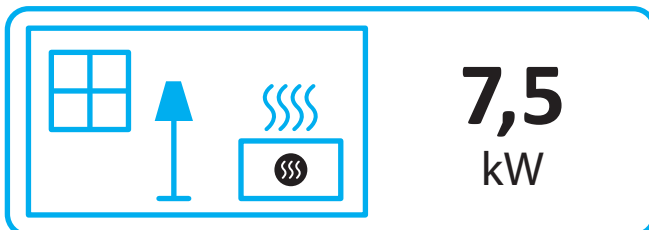
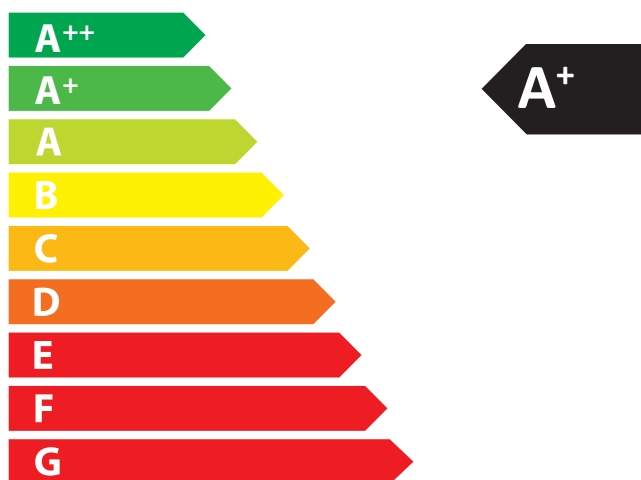
There may be modifications to technical details caused by ongoing developments; subject to errors and omissions. Dated: 12/2024



**ENERG**  
енергия · ενέργεια



Camina  Schmid Ekko L/R 67(34) evo



ENERGIA · ЕНЕРГИЯ · ΕΝΕΡΓΕΙΑ · ENERGIJA · ENERGY · ENERGIE · ENERGI

2015/1186