

# Ekko L 67(45) h

## Data sheet

### Details

- Fireplace insert, open on two sides
- Glass: 1-section
- 67(45)51 – Height 51 cm  
67(45)57 – Height 57 cm
- Optional: Self-closing door
- Adjustable lower air washing
- Standard fire box inner lining: white smooth chamotte
- High-grade cast-iron dome, all parts can be moved, adjustable between 0 – 90°

### Technical data

• Nominal heat output	9 kW
• Thermal output range	3,4 – 9,8 kW
• Efficiency	>78 %
• Insulation thickness (with wall that does not need to be protected) (based on SILCA® 250KM)	60 mm
• Combustion air connector	Ø 125 mm
• Recommend length of logs	33 cm
• Weight	220 – 260 kg
• Heat distribution through the viewing window	50 %
• Heat distribution, convective output	50 %

**Data for chimney sweep** according to DIN EN 13384 (closed operation)

### Triple values with nominal heat output

• Flue gas mass flow	9,5 g/s
• Flue gas temperature	330 °C
• Required delivery pressure	12 Pa

### Triple values for calculating ceramic flues (wood fuel)

• Firing power	23,3 kW
• Flue gas mass flow	16,7 g/s
• Flue gas temperature upstream of the connecting surface	347 °C
• Required delivery pressure at the flue gas connector	15 Pa
• Combustion air requirement	93,3 m³/h
• Recommended flue length <sup>1</sup>	3,5 m

### Data for closed design

• Minimum heat-emitting surface <sup>2</sup>	3,7 m²
--	--------

<sup>1</sup>The information regarding flue lengths is a recommendation and based on the calculation in accordance with TROL 2022 chapter 15. The calculation is based on a medium-heavy design and a flue ratio of 360 cm².

<sup>2</sup>Average value based on the storage time. Dependent on the material properties and the construction thickness. Mean specific heat distribution = approx. 500 W/m²

There may be modifications to the colour and technical details caused by ongoing developments; subject to errors and omissions. Dated: 08/2025



Ekko L 67(45) with guillotine front

### Standard



Kristall front



Guillotine door



125 mm  
Combustion air  
connector

### Optional



Frame



Support frame  
system



External fuel-door



150 mm  
Combustion air  
connector

### Accessories



Heat exchanger



Top mounted heat  
exchanger



Adera



Energy efficiency  
class in accordance  
with (EU) 2015/1186



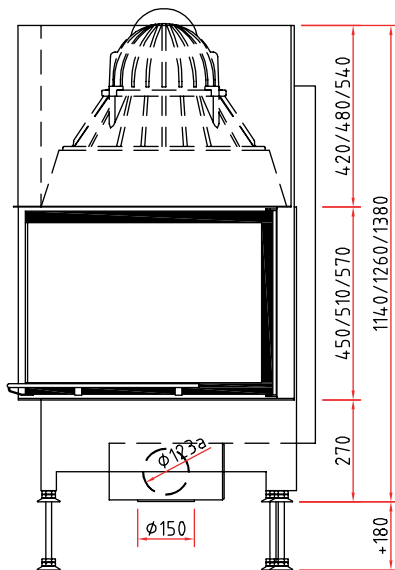
1. Federal Emissions  
Control Ordinance  
Stage 2



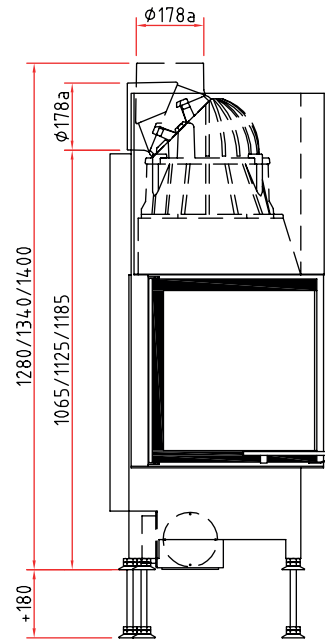
# Ekko L 67(45) h

## Dimensional drawing

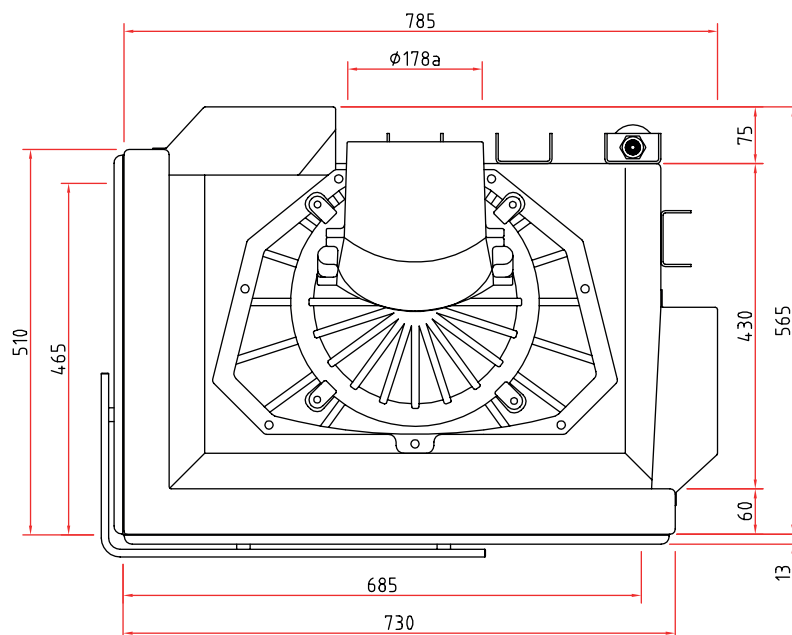
Front view, scale 1:20



Side view, scale 1:20

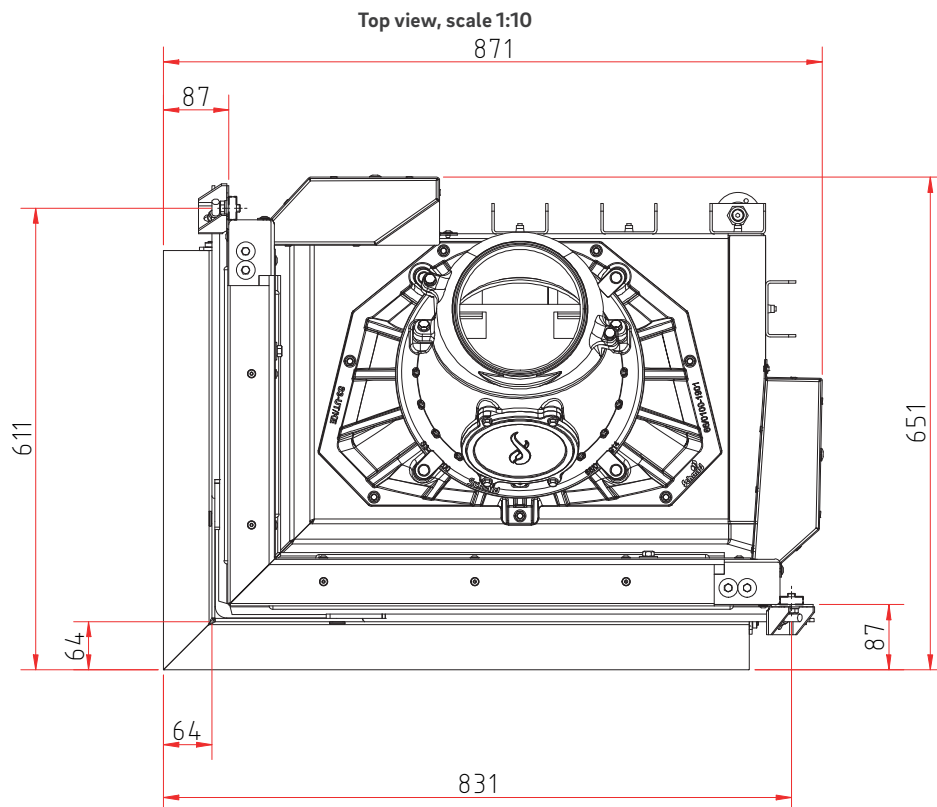
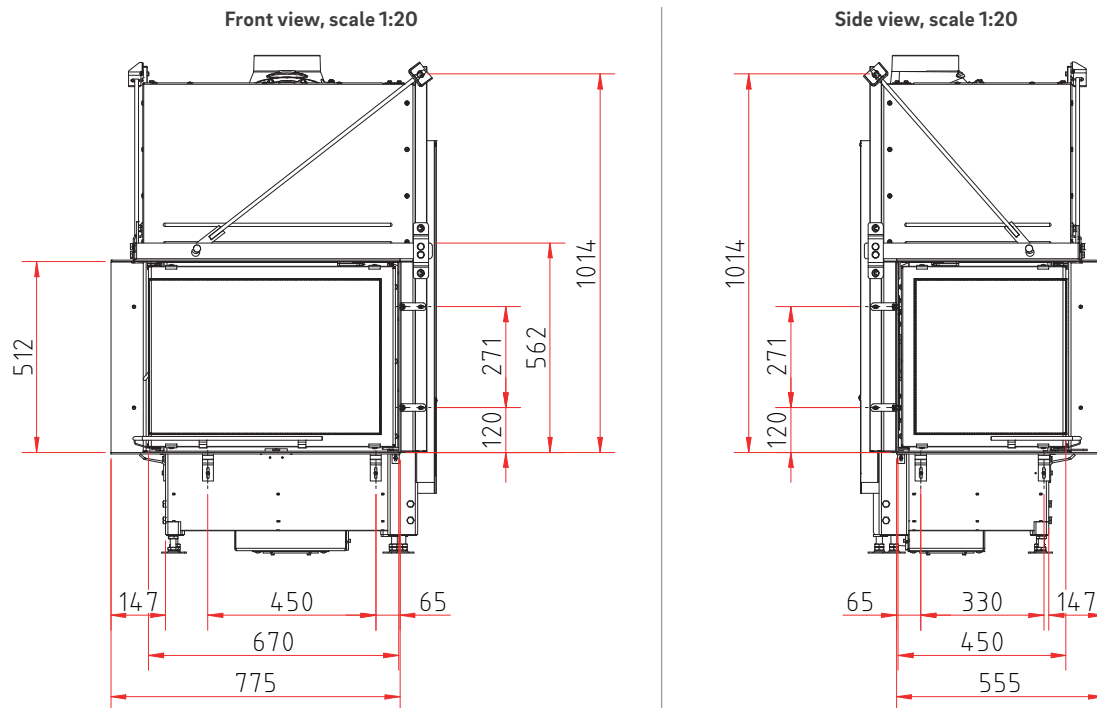


Top view, scale 1:10



# Ekko L 67(45)51 h

Dimensional drawing with frame system



Illustrations are similar. All photos and drawings are protected by copyright. Usage or publication, even of individual details, is only permitted with our authorisation. There may be modifications to the colour and technical details caused by ongoing developments; subject to errors and omissions. Dated: 12/2023

## Product data sheet

Regulation (EU) 2015/1186 supplementing Directive 2010/30/EU

	<b>Ekko L/R 67(45) s/h</b>
<b>Supplier's name:</b>	Camina & Schmid Feuerdesign und Technik GmbH & Co. KG
<b>Supplier's model identifier:</b>	Ekko L/R 67(45) s/h
<b>Energy efficiency class:</b>	A
<b>Direct heat output (kW)</b>	9,0
<b>Indirect heat output (kW):</b>	–
<b>Energy efficiency index (EEI):</b>	103,2
<b>Energy efficiency at nominal heat output (%):</b>	78,1
<b>Notes for specific precautions, installation or maintenance:</b>	Please note the reference in the assembly instructions and operating manuals!

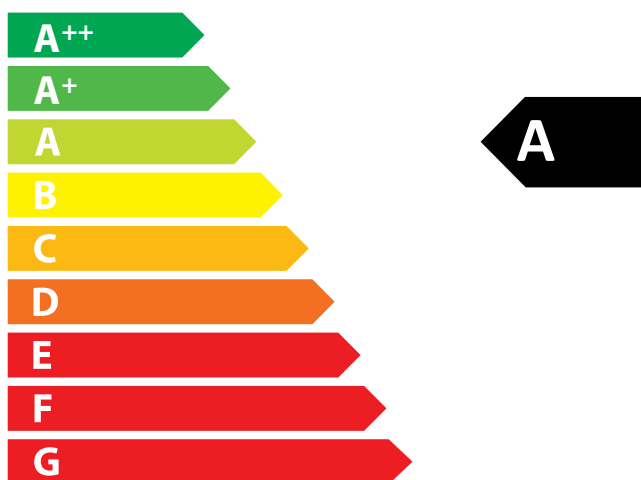
*There may be modifications to technical details caused by ongoing developments; subject to errors and omissions. Dated: 11/2021*

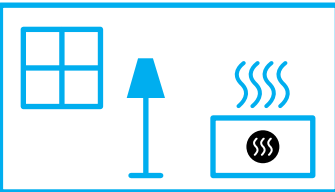


ENERG  
енергия · ενέργεια



Camina  Schmid Ekko L/R 67(45) s/h





9,0  
kW

ENERGIA · ЕНЕРГИЯ · ΕΝΕΡΓΕΙΑ · ENERGIJA · ENERGY · ENERGIE · ENERGI

2015/1186