

Ekko L 100(45) h

Data sheet

Details

- Fireplace insert, open on two sides
- Glass: 1-section
- 100(45)51 – Height 51 cm
100(45)57 – Height 57 cm
- Optional: Self-closing door
- Adjustable lower air washing
- Standard fire box inner lining: white smooth chamotte
- High-grade cast-iron dome, all parts can be moved, adjustable between 0 – 90°

Technical data

• Nominal heat output	9 kW
• Thermal output range	4,1 – 9,4 kW
• Efficiency	>78 %
• Insulation thickness (with wall that does not need to be protected) (based on SILCA® 250KM)	60 mm
• Combustion air connector	2 x Ø 125 mm
• Recommend length of logs	33 cm
• Weight	330 – 350 kg
• Heat distribution through the viewing window	50 %
• Heat distribution, convective output	50 %

Data for chimney sweep according to DIN EN 13384 (closed operation)

Triple values with nominal heat output

• Flue gas mass flow	9,5 g/s
• Flue gas temperature	310 °C
• Required delivery pressure	12 Pa

Triple values for calculating ceramic flues (wood fuel)

• Firing power	23,2 kW
• Flue gas mass flow	16,7 g/s
• Flue gas temperature upstream of the connecting surface	343 °C
• Required delivery pressure at the flue gas connector	15 Pa
• Combustion air requirement	88,8 m³/h
• Recommended flue length ¹	1,7 m

Data for closed design

• Minimum heat-emitting surface ²	3,5 m²
--	--------

¹The information regarding flue lengths is a recommendation and based on the calculation in accordance with TROL 2022 chapter 15. The calculation is based on a medium-heavy design and a flue ratio of 360 cm².

²Average value based on the storage time. Dependent on the material properties and the construction thickness. Mean specific heat distribution = approx. 500 W/m²

There may be modifications to the colour and technical details caused by ongoing developments; subject to errors and omissions. Dated: 08/2025



Ekko L 100(45) with guillotine front

Standard



Kristall front



Guillotine door



2 x 125 mm
Combustion air connector

Optional



Frame



Support frame system



External fuel-door



150 mm
Combustion air connector

Accessories



Adera



Energy efficiency class in accordance with (EU) 2015/1186



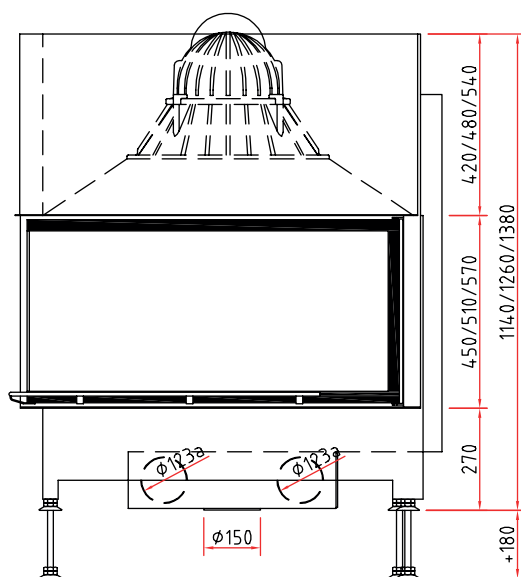
1. Federal Emissions Control Ordinance Stage 2



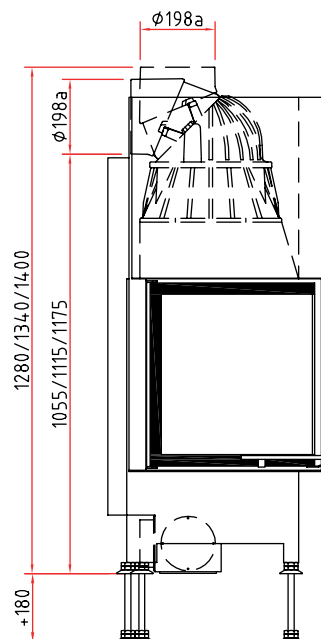
Ekko L 100(45) h

Dimensional drawing

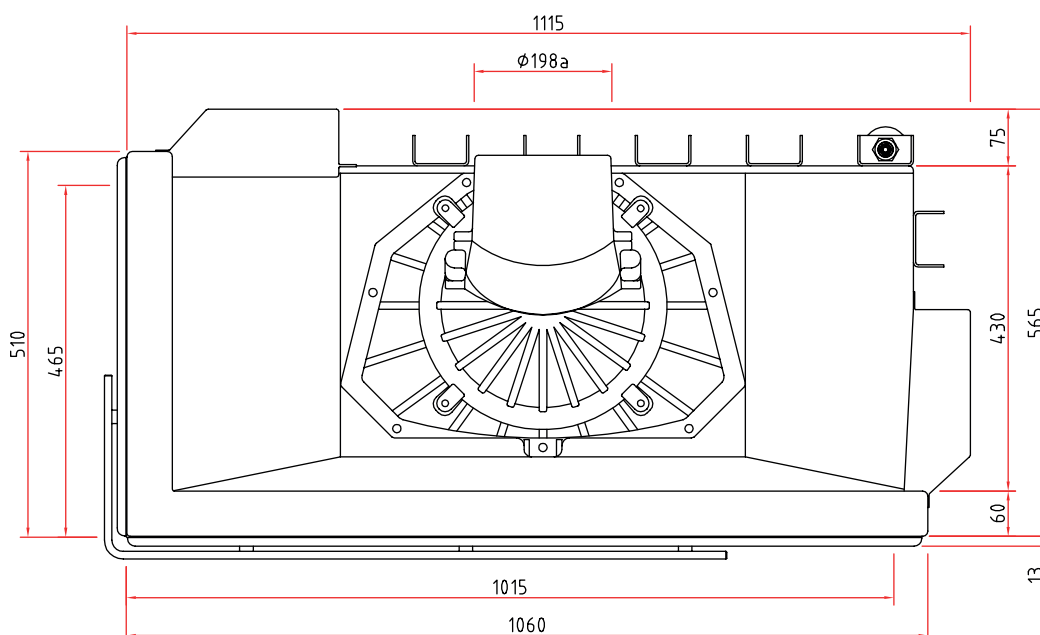
Front view, scale 1:20



Side view, scale 1:20

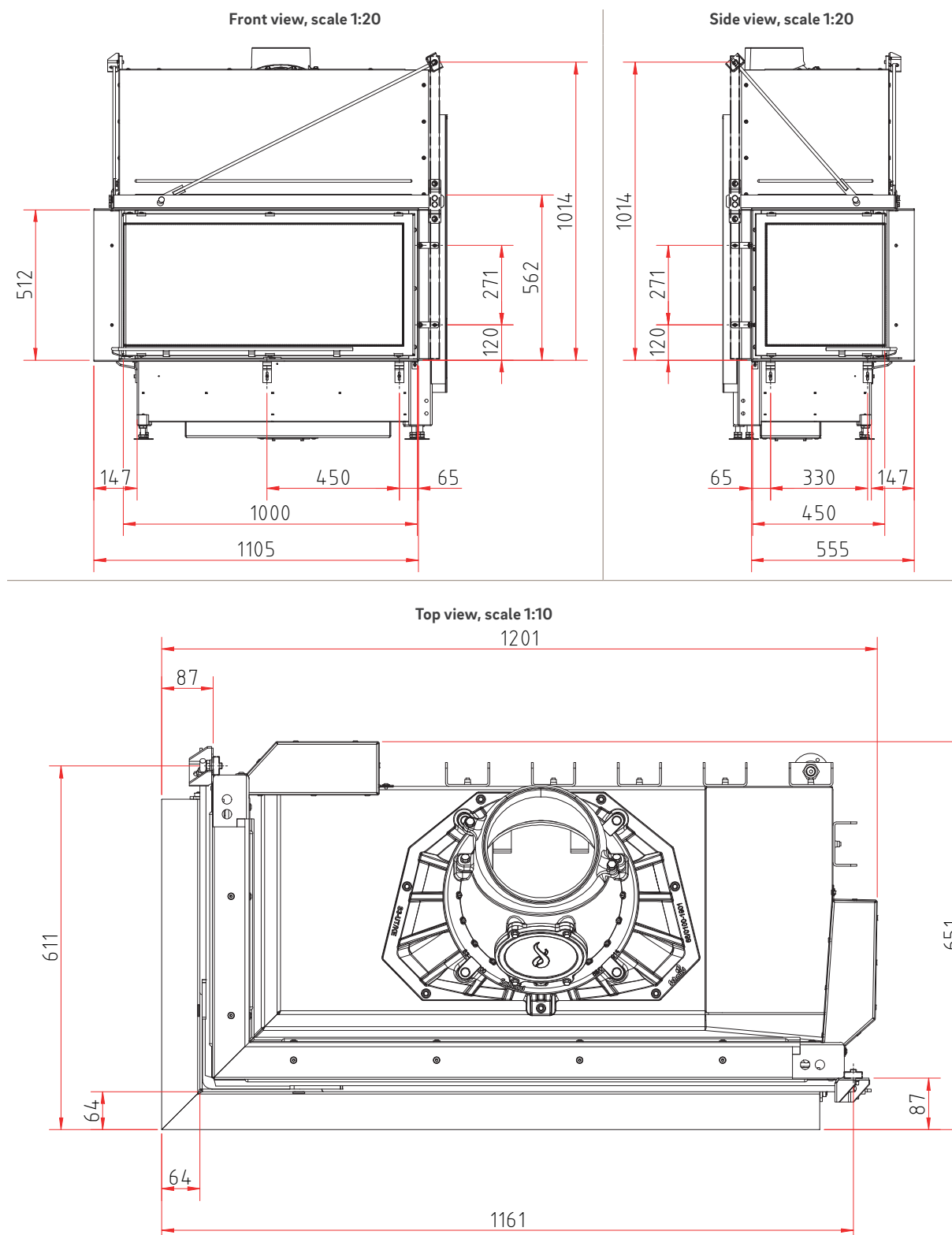


Top view, scale 1:10



Ekko L 100(45)51 h

Dimensional drawing with frame system



Product data sheet

Regulation (EU) 2015/1186 supplementing Directive 2010/30/EU

	Ekko L/R 100(45) h
Supplier's name:	Camina & Schmid Feuerdesign und Technik GmbH & Co. KG
Supplier's model identifier:	Ekko L/R 100(45) h
Energy efficiency class:	A
Direct heat output (kW)	9,0
Indirect heat output (kW):	–
Energy efficiency index (EEI):	103,5
Energy efficiency at nominal heat output (%):	78,3
Notes for specific precautions, installation or maintenance:	Please note the reference in the assembly instructions and operating manuals!

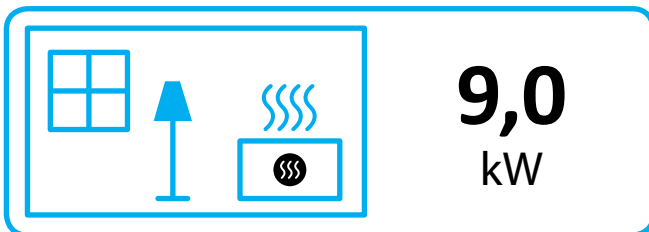
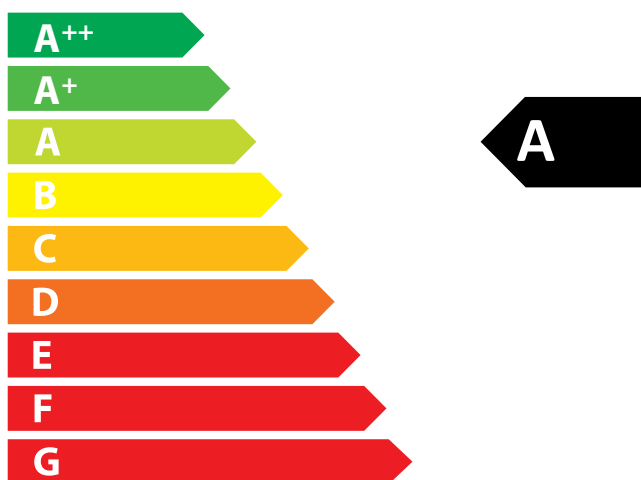
There may be modifications to technical details caused by ongoing developments; subject to errors and omissions. Dated: 11/2021



ENERG
енергия · ενέργεια



Camina  Schmid Ekko L/R 100(45) h



ENERGIA · ЕНЕРГИЯ · ΕΝΕΡΓΕΙΑ · ENERGIJA · ENERGY · ENERGIE · ENERGI

2015/1186