

# SH 8 G

## Data sheet

### Details

- Manual combustion air control
- Ground and side stone can be replaced through the fire door
- Suitable for multiple flue connections

### Technical data

- |   |            |
|---|------------|
| • Nominal heat output incl. NHK   | 8 kW       |
| • Thermal output range  | 3,1–7,2 kW |
| • Efficiency  | >80 %      |
| • Insulation thickness (with wall that does not need to be protected) (based on SILCA® 250KM) | 60 mm      |
| • Combustion air connector  | Ø 125 mm   |
| • Recommend length of logs  | 33 cm      |
| • Weight including chamotte   | 155 kg     |
| • Heat distribution through the viewing window  | 10 %       |
| • Heat distribution, convective output  | 90 %       |
| • Combustion air requirement  | 26 m³/h    |



SH 8 G

### Standard



Door hinge on right



Double glazed



Combustion air connector



Wood-burning

**Data for chimney sweep** according to DIN EN 13384 (closed operation)

### Triple values with nominal heat output

- |   |         |
|---|---------|
| • Flue gas mass flow  | 7,5 g/s |
| • Flue gas temperature downstream of the connecting surface | 240 °C  |
| • Required delivery pressure                                | 12 Pa   |

### Triple values for calculating ceramic flues (wood fuel)

- |   |           |
|---|-----------|
| • Firing power  | 11,6 kW   |
| • Flue gas mass flow                                      | 14,7 kW   |
| • Flue gas temperature upstream of the connecting surface | 498 °C    |
| • Required delivery pressure at the flue gas connector    | 15 Pa     |
| • Combustion air requirement                              | 33,2 m³/h |

### Accessories



SMR



Energy efficiency class in accordance with (EU) 2015/1186



1. Federal Emissions Control Ordinance Stage 2

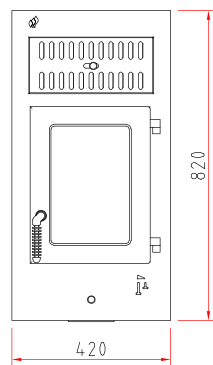


There may be modifications to the colour and technical details caused by ongoing developments; subject to errors and omissions. Dated: 10/2018

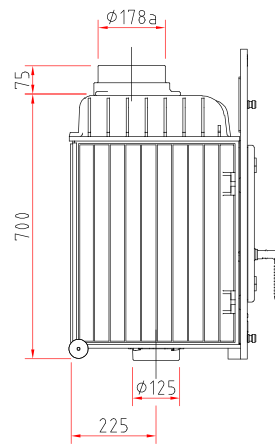
# SH 8 G

## Dimensional drawing

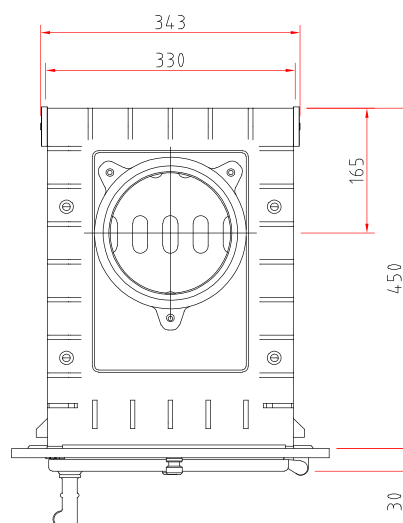
Front view, scale 1:20



Side view, scale 1:20



Top view, scale 1:10



## Product data sheet

Regulation (EU) 2015/1186 supplementing Directive 2010/30/EU

	SH 8 G, SH 8 G/B
<b>Supplier's name:</b>	Camina & Schmid Feuerdesign und Technik GmbH & Co. KG
<b>Supplier's model identifier:</b>	SH 8 G, SH 8 G/B
<b>Energy efficiency class:</b>	A+
<b>Direct heat output (kW)</b>	8,0
<b>Indirect heat output (kW):</b>	–
<b>Energy efficiency index (EEI):</b>	111,9
<b>Energy efficiency at nominal heat output (%):</b>	84,1
<b>Notes for specific precautions, installation or maintenance:</b>	Please note the reference in the assembly instructions and operating manuals!

*There may be modifications to technical details caused by ongoing developments; subject to errors and omissions. Dated: 11/2021*



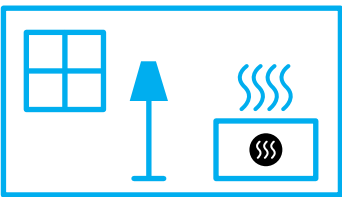
ENERG  
енергия · ενέργεια



Camina  Schmid SH 8 G, SH 8 G/B



A<sup>+</sup>



8,0  
kW

ENERGIA · ЕНЕРГИЯ · ΕΝΕΡΓΕΙΑ · ENERGIJA · ENERGY · ENERGIE · ENERGI

2015/1186