

# SD 6 F

## Data sheet

### Details

- Manual combustion air control
- Ground and side stone can be replaced through the fire door
- Suitable for multiple flue connections

### Technical data

	Wood	Brown coal
• Nominal heat output incl. NHK	6 kW	4 kW
• Thermal output range	3,7 – 6,4 kW	–
• Efficiency	> 80 %	> 80 %
• Insulation thickness (with wall that does not need to be protected) (based on SILCA® 250KM)	60 mm	60 mm
• Combustion air connector	–	–
• Recommend length of logs	33 cm	33 cm
• Weight including chamotte	150 kg	150 kg
• Heat distribution through the viewing window	10 %	10 %
• Heat distribution, convective output	90 %	90 %
• Combustion air requirement	22,8 m³/h	11,8 m³/h



SD 6 F

### Standard



Door hinge on right



Double glazed



Mixed fuel

**Data for chimney sweep** according to DIN EN 13384 (closed operation)

### Triple values with nominal heat output

• Flue gas mass flow	6,9 g/s	4,9 g/s
• Flue gas temperature downstream of the connecting surface	149 °C	105 °C
• Required delivery pressure	12 Pa	12 Pa

### Triple values for calculating ceramic flues (wood fuel)

• Firing power	11,2 kW	–
• Flue gas mass flow	14,0 g/s	–
• Flue gas temperature upstream of the connecting surface	504 °C	–
• Required delivery pressure at the flue gas connector	15 Pa	–
• Combustion air requirement	31,9 m³/h	–



Energy efficiency class in accordance with (EU) 2015/1186



1. Federal Emissions Control Ordinance Stage 2

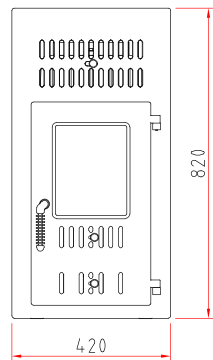


There may be modifications to the colour and technical details caused by ongoing developments; subject to errors and omissions. Dated: 10/2018

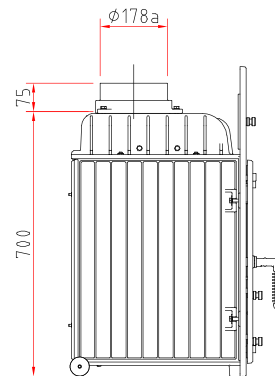
# SD 6 F

## Dimensional drawing

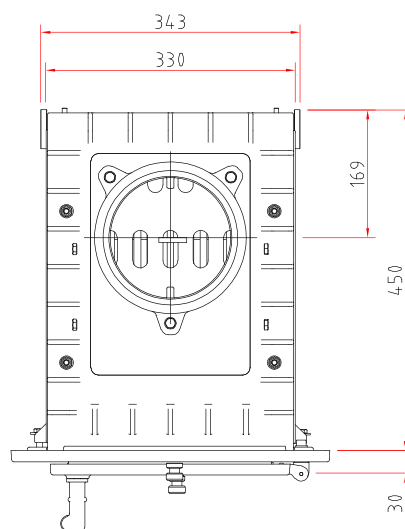
Front view, scale 1:20



Side view, scale 1:20



Top view, scale 1:10



## Product data sheet

Regulation (EU) 2015/1186 supplementing Directive 2010/30/EU

	SD 6 F
Supplier's name:	Camina & Schmid Feuerdesign und Technik GmbH & Co. KG
Supplier's model identifier:	SD 6 F
Energy efficiency class:	A+
Direct heat output (kW)	6,0
Indirect heat output (kW):	–
Energy efficiency index (EEI):	114,8
Energy efficiency at nominal heat output (%):	86,1
Notes for specific precautions, installation or maintenance:	Please note the reference in the assembly instructions and operating manuals!

*There may be modifications to technical details caused by ongoing developments; subject to errors and omissions. Dated: 11/2021*



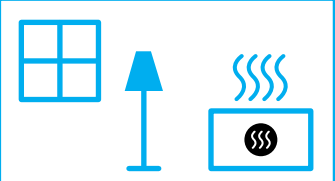
ENERG  
енергия · ενέργεια



Camina  Schmid SD 6 F



**A<sup>+</sup>**



**6,0**  
kW

ENERGIA · ЕНЕРГИЯ · ΕΝΕΡΓΕΙΑ · ENERGIJA · ENERGY · ENERGIE · ENERGI

2015/1186