

Profi W 12 Front Profi K

Data sheet

Details

- Boiler stove, completely surrounded by water
- Suitable for multiple flue connections
- With upper, low-emission firing
- With 3 flue gas connection options
- Including Thermal discharge safety device (TAS) with 4 m Capillary tube and sensor pocket (L = 148 mm)

Technical data

• Nominal heat output without NHK	14,9 kW
• Thermal output range	7,1 – 14,9 kW
• Water heat output	10,6 kW
• Efficiency	> 80 %
• Insulation thickness (with wall that does not need to be protected) (based on SILCA® 250KM)	60 mm
• Combustion air connector	Ø 150 mm
• Recommend length of logs	50 cm
• Weight including chamotte	360 kg
• Heat distribution through the viewing window	15 %
• Heat distribution, convective output	15 %
• Heat distribution: waterside output	70 %
• Combustion air requirement	52,9 m³/h
• Water content	80 ltr.
• Max. operating pressure	3,0 bar

Data for chimney sweep according to DIN EN 13384 (closed operation)

Triple values with nominal heat output

• Flue gas mass flow	10,1 g/s
• Flue gas temperature downstream of the connecting surface	300 °C
• Required delivery pressure	12 Pa

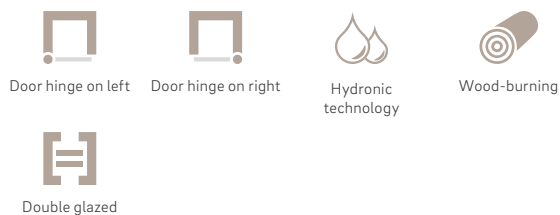
Triple values for calculating ceramic flues (wood fuel)

• Firing power	23,1 kW
• Flue gas mass flow	28,6 kW
• Flue gas temperature upstream of the connecting surface	363 °C
• Required delivery pressure at the flue gas connector	15 Pa
• Combustion air requirement	65,1 m³/h



Profi W 12 – Front Profi K

Standard



Optional



Accessories



SMR



Energy efficiency class in accordance with (EU) 2015/1186



1. Federal Emissions Control Ordinance Stage 2

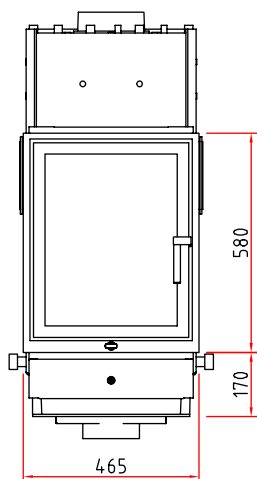


There may be modifications to the colour and technical details caused by ongoing developments; subject to errors and omissions. Dated: 07/2018

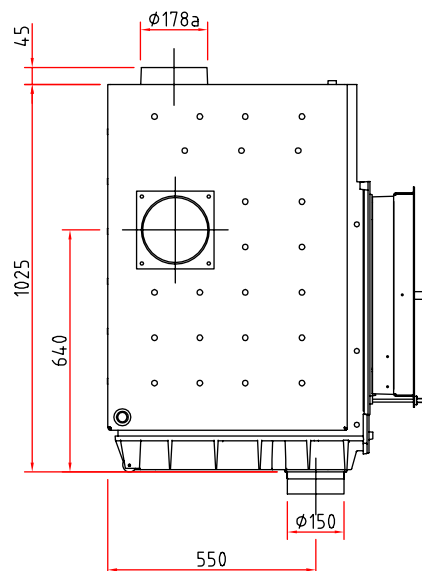
Profi W 12 Front Profi K

Dimensional drawing

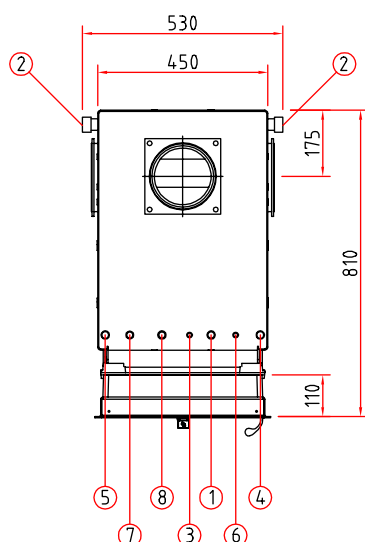
Front view, scale 1:20



Side view, scale 1:20



Top view, scale 1:20



Water connections

- ① Heating flow 3/4" male
- ② Return 3/4" male
- ③ Quick vent 3/8" female
- ④ Pump control sensor 1/2" female
- ⑤ Sensor for thermal discharge safety device (TAS) 1/2" female
- ⑥ Fresh water supply 1/2" male / thermal discharge safety device
- ⑦ Fresh water drain 1/2" male / thermal discharge safety device
- ⑧ Safety valve 1/2" female

Important notes

- * Ensure that all connections and safety devices are accessible (e.g. grille or inspection door).
- * Never exceed the maximum ambient temperature of 160 °C.
- * Fit the safety valve, thermal discharge safety device and air vent in the cold part of the system, if required.

Product data sheet

Regulation (EU) 2015/1186 supplementing Directive 2010/30/EU

	Profi W 12
Supplier's name:	Camina & Schmid Feuerdesign und Technik GmbH & Co. KG
Supplier's model identifier:	Profi W 12
Energy efficiency class:	A+
Direct heat output (kW)	4,3
Indirect heat output (kW):	10,6
Energy efficiency index (EEI):	112,8
Energy efficiency at nominal heat output (%):	84,7
Notes for specific precautions, installation or maintenance:	Please note the reference in the assembly instructions and operating manuals!

There may be modifications to technical details caused by ongoing developments; subject to errors and omissions. Dated: 11/2021



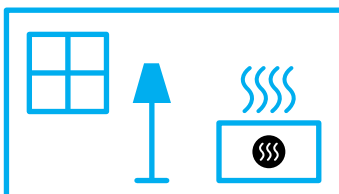
ENERG
енергия · ενέργεια



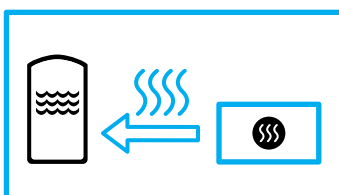
Camina  Schmid Profi W 12



A⁺



4,3
kW



10,6
kW

ENERGIA · ЕНЕРГИЯ · ΕΝΕΡΓΕΙΑ · ENERGIJA · ENERGY · ENERGIE · ENERGI

2015/1186