

# JU 11

## Data sheet

### Details

- With decorative front plate, black painted
- Burn through technology
- With upper, low-emission firing
- With proven combustion chamber-refractory / cast-iron combination
- With secondary air system
- With special grate unit with burner block

### Technical data

• Nominal heat output incl. NHK	11kW
• Thermal output range	5,3 – 11,8 kW
• Efficiency	> 80 %
• Insulation thickness (with wall that does not need to be protected) (based on SILCA® 250KM)	60 mm
• Combustion air connector	–
• Recommend length of logs	50 cm
• Weight including chamotte	200 kg
• Heat distribution through the viewing window	10 %
• Heat distribution, convective output	90 %
• Combustion air requirement	41,5 m³/h



JU 11

### Standard



Door hinge on right



Grate combustion

**Data for chimney sweep** according to DIN EN 13384 (closed operation)

### Triple values with nominal heat output

• Flue gas mass flow	12,9 g/s
• Flue gas temperature downstream of the connecting surface	249 °C
• Required delivery pressure	12 Pa

### Triple values for calculating ceramic flues (wood fuel)

• Firing power	38,4 kW
• Flue gas mass flow	29,1 kW
• Flue gas temperature upstream of the connecting surface	643 °C
• Required delivery pressure at the flue gas connector	15 Pa
• Combustion air requirement	33,7 m³/h



Energy efficiency class in accordance with (EU) 2015/1186



1. Federal Emissions Control Ordinance Stage 2

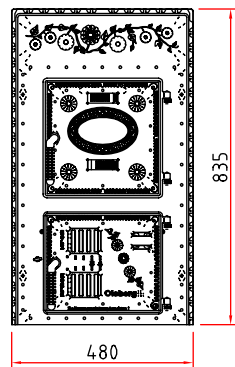


There may be modifications to the colour and technical details caused by ongoing developments; subject to errors and omissions. Dated: 07/2018

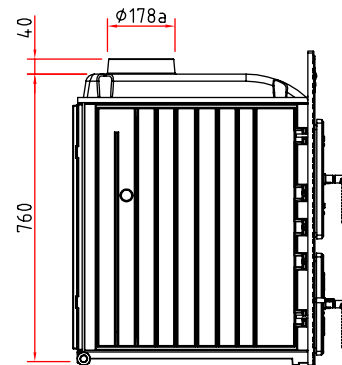
# JU 11

## Dimensional drawing

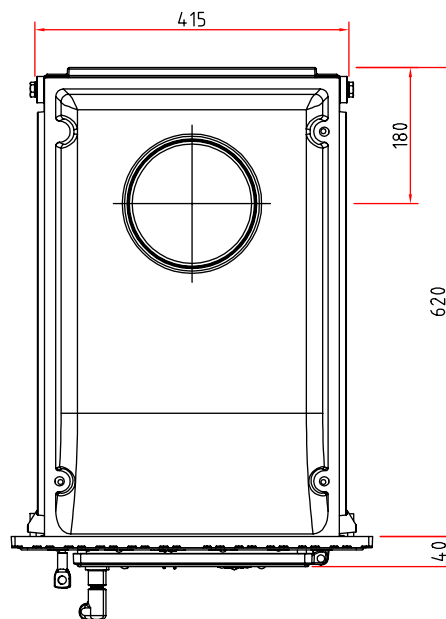
Front view, scale 1:20



Side view, scale 1:20



Top view, scale 1:10



## Product data sheet

Regulation (EU) 2015/1186 supplementing Directive 2010/30/EU

	Format 11, JU 11
Supplier's name:	Camina & Schmid Feuerdesign und Technik GmbH & Co. KG
Supplier's model identifier:	Format 11, JU 11
Energy efficiency class:	A+
Direct heat output (kW)	11,0
Indirect heat output (kW):	–
Energy efficiency index (EEI):	107,5
Energy efficiency at nominal heat output (%):	81,0
Notes for specific precautions, installation or maintenance:	Please note the reference in the assembly instructions and operating manuals!

*There may be modifications to technical details caused by ongoing developments; subject to errors and omissions. Dated: 11/2021*



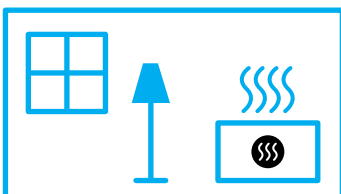
ENERG  
енергия · ενέργεια



Camina  Schmid Format 11, JU 11



A<sup>+</sup>



11,0  
kW

ENERGIA · ЕНЕРГИЯ · ΕΝΕΡΓΕΙΑ · ENERGIJA · ENERGY · ENERGIE · ENERGI

2015/1186