

Lina GO TV 4557

Data sheet

Details

- 1-sided open combustion chamber, Tunnel version
- 4557 – Height 57 cm
- Includes detachable frame
- Hinged door, self-closing with SLS closure
- The outer shell is consisting of 60 mm thick heat storage material for a long-lasting heat release
- Suitable for multiple flue connections

Technical data

• Fuel volume min.	3 kg
• Fuel volume max.	7,5 kg
• Efficiency	> 80 %
• Combustion air requirement	56 m³/h
• Recommended length of logs	25 cm
• Weight	250 kg
• Weight with rotary chimney (wall and ceiling connection)	425 kg

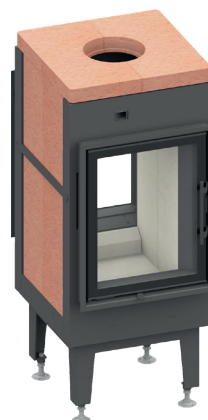
Data for chimney sweep according to DIN EN 13384 (closed operation)

Ceramic flues in storage operation

• Flue gas mass flow	20,3 g/s
• Flue gas temperature at the chimney connection	429 °C
• Required delivery pressure	12 Pa

Triple values with rotary flue

• Flue gas mass flow	14,4 g/s
• Flue gas temperature at the chimney connection	187 °C
• Required delivery pressure	12 Pa



Lina GO TV 4557

Standard



Kristall front



Tunnel version



Door hinge on left



Door hinge on right



Wood-burning



125 mm
Combustion air connector

Accessories



Adera



1. Federal Emissions Control Ordinance Stage 2

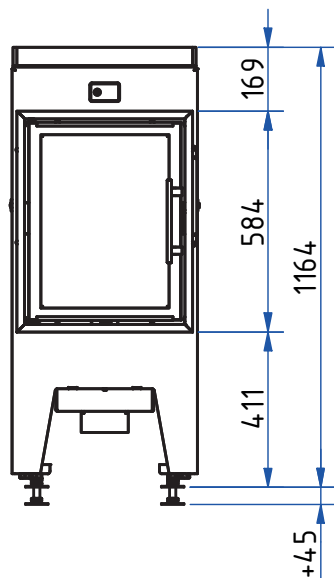


There may be modifications to the colour and technical details caused by ongoing developments; subject to errors and omissions. Dated: 09/2025

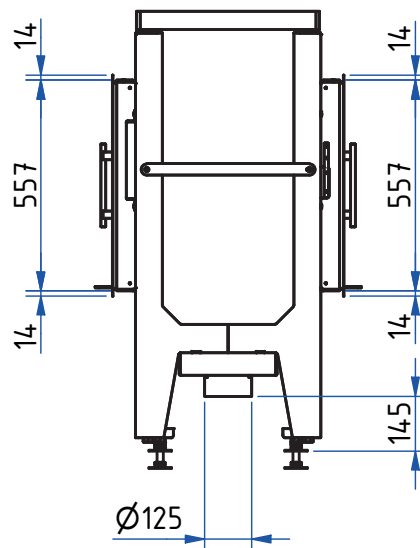
Lina GO TV 4557

Dimensional drawing

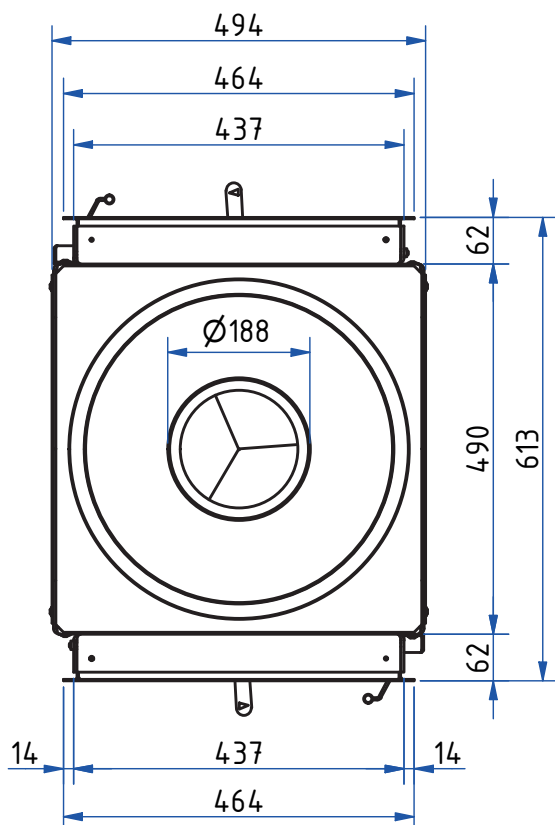
Front view, scale 1:20



Side view, scale 1:20



Top view, scale 1:10



Side view with rotary chimney for wall and ceiling connection, scale 1:20

