

Lina G TV 87

Data sheet

Details

- Gas fireplace insert, Tunnel version
- Versatile burner system with efficient and energy-saving combustion technology
- Fire box inner lining: anthracite sheet steel (matt) or black ceramic glass (polished)
- Realistic ceramic wood logs
- Dynamic and realistic flame pattern you will never tire of
- Optional: LED ambient lighting
- Can be connected to an existing gas supply and also integrated into existing fireplaces



Lina G TV 87 with fire box inner lining, anthracite sheet steel (matt)

Technical data*

Nominal heat load	10,8 kW
Output range	1,8 – 9,3 kW
Electrical power consumption	10 W (max.) / 3 W (Standby)
Flue gas pipe connector	Ø 130 / 200 mm
Gas connection	1/2"
Permitted concentric flue system (LAS)	Schmid LAS
Type of gas installation	C11, C31, C91
Fire box appearance	Realistic ceramic wood logs
Weight including control and ceramic wood logs, approx.	235 kg

Standard



Sheet steel
anthracite (matt)



Ceramic glass
black (polished)

Accessories



LED ambient
Lighting



Interior
lighting



Gas safety hose

* based on natural gas I_{2H}

There may be modifications to the colour and technical details caused by ongoing developments; subject to errors and omissions. Dated: 05/2020



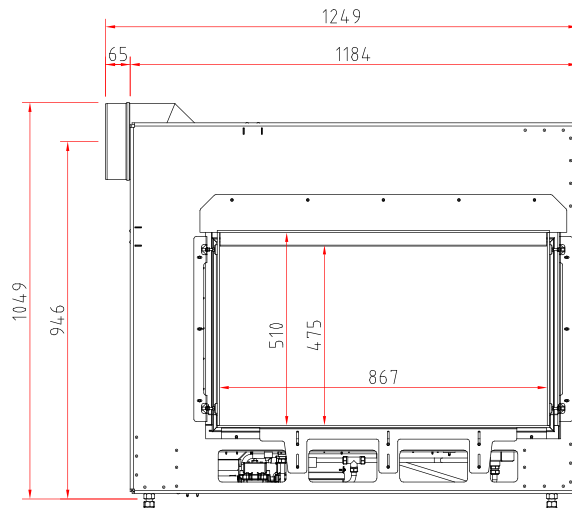
Energy efficiency
class in accordance
with (EU) 2015/1186



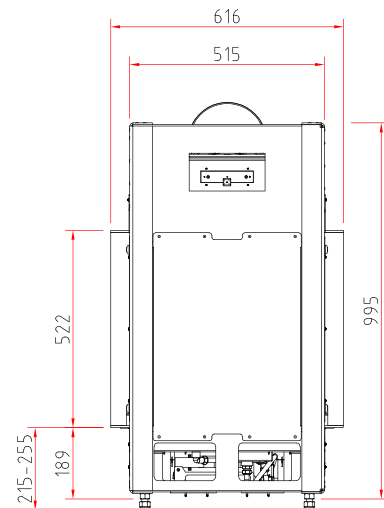
Lina G TV 87

Dimensional drawing with wall connection

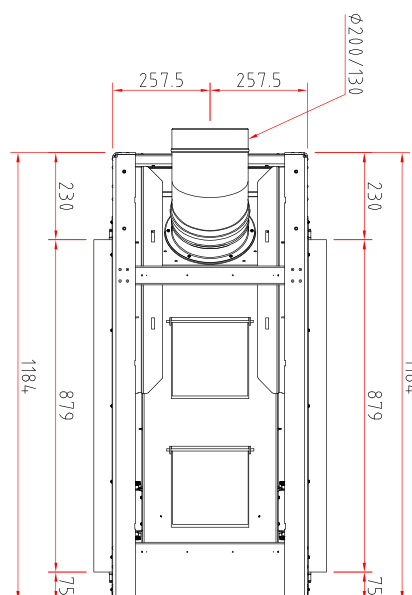
Front view, scale 1:20



Side view, scale 1:20



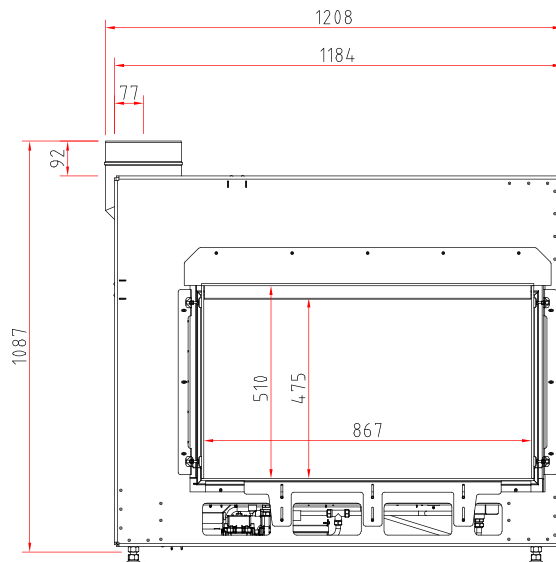
Top view, scale 1:10



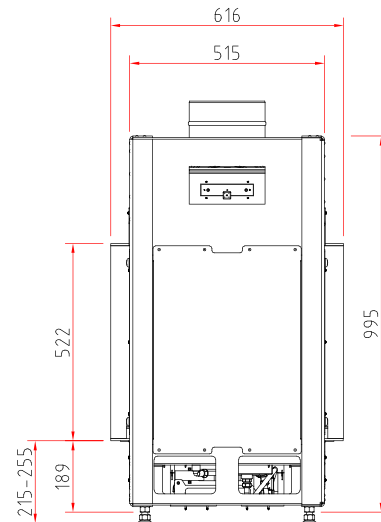
Lina G TV 87

Dimensional drawing with ceiling connection

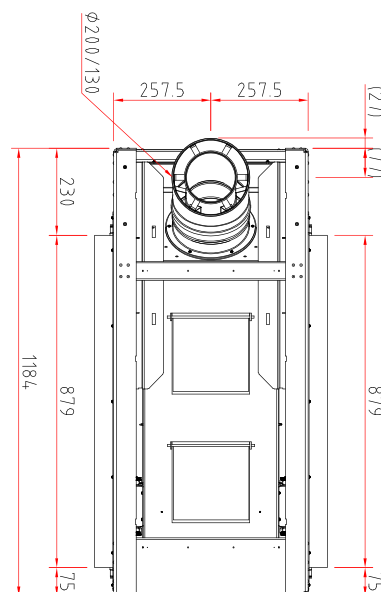
Front view, scale 1:20



Side view, scale 1:20



Top view, scale 1:10



Product data sheet

Regulation (EU) 2015/1186 supplementing Directive 2010/30/EU

	Lina G TV 87, Ekko G U 45(90) (Erd-/Flüssiggas)
Supplier's name:	Camina & Schmid Feuerdesign und Technik GmbH & Co. KG
Supplier's model identifier:	Lina G TV 87, Ekko G U 45(90) (Erd-/Flüssiggas)
Energy efficiency class:	A
Direct heat output (kW)	9,8
Indirect heat output (kW):	–
Energy efficiency index (EEI):	92,4
Energy efficiency at nominal heat output (%):	86,0
Notes for specific precautions, installation or maintenance:	Please note the reference in the assembly instructions and operating manuals!

There may be modifications to technical details caused by ongoing developments; subject to errors and omissions. Dated: 11/2021

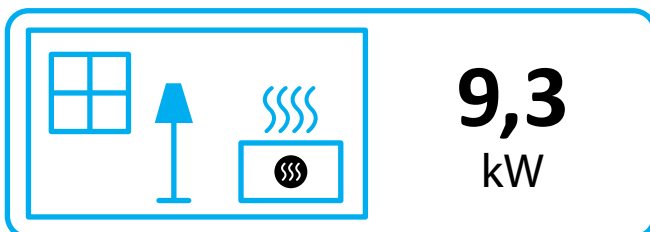
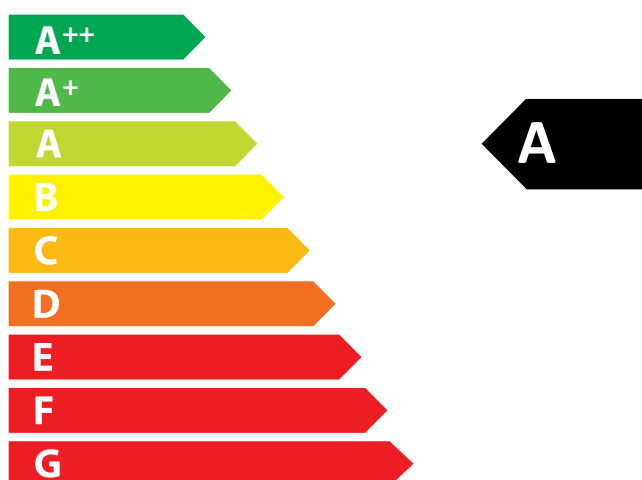


ENERG
енергия · ενέργεια



Camina  Schmid

Lina G TV 87, Ekko G U 45(90)
(Erd-/Flüssiggas)



ENERGIA · ЕНЕРГИЯ · ΕΝΕΡΓΕΙΑ · ENERGIJA · ENERGY · ENERGIE · ENERGI

2015/1186