

# Ekko G U 45(90)

## Data sheet

### Details

- Gas fireplace insert open on 3 sides as a room divider
- 4 burning ceramic wood logs
- Fire box inner lining: anthracite sheet steel (matt) or black ceramic glass (polished)
- Direct connection to the chimney is possible through a 45° flue gas connector
- Optional: LED ambient lighting with Interior lighting
- Disc locks for easy maintenance
- "Floating installation" possible
- Can be connected to an existing gas supply and also integrated into existing fireplaces



Ekko G U 45(90) with fire box inner lining, anthracite sheet steel (matt)

### Technical data\*

Nominal heat load	10,8 kW
Output range	1,8 – 9,3 kW
Electrical power consumption	10 W (max.) / 3 W (Standby)
Flue gas pipe connector	Ø 130 / 200 mm
Gas connection	1/2"
Permitted concentric flue system (LAS)	Schmid LAS
Type of gas installation	C11, C31, C91
Fire box appearance	Realistic ceramic wood logs
Weight including control and ceramic wood logs, approx.	235 kg

### Standard



Sheet steel  
anthracite (matt)



Ceramic glass  
black (polished)

### Accessories



LED ambient  
Lighting



Interior lighting



Gas safety hose

\* based on natural gas I<sub>2H</sub>

There may be modifications to the colour and technical details caused by ongoing developments; subject to errors and omissions. Dated: 07/2019



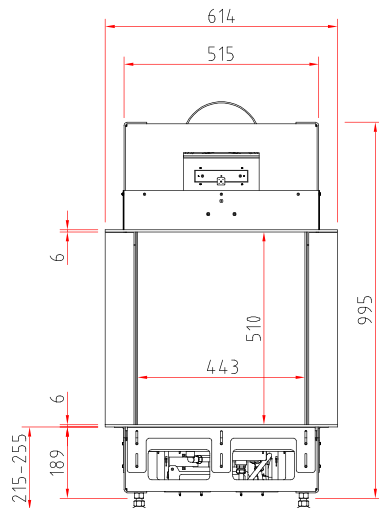
Energy efficiency  
class in accordance  
with (EU) 2015/1186



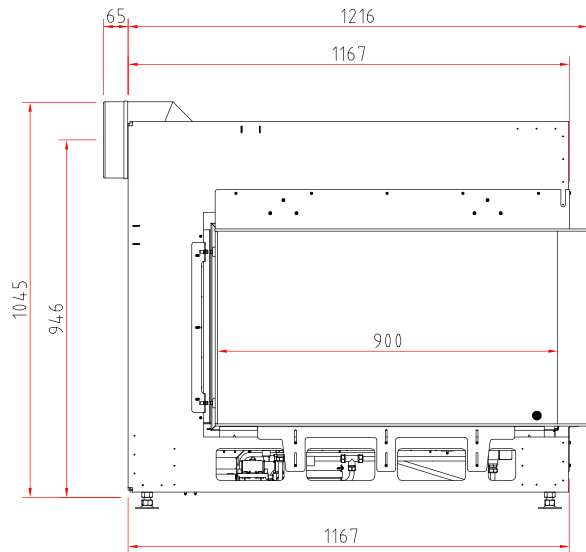
# Ekko G U 45(90)

## Dimensional drawings for wall connection

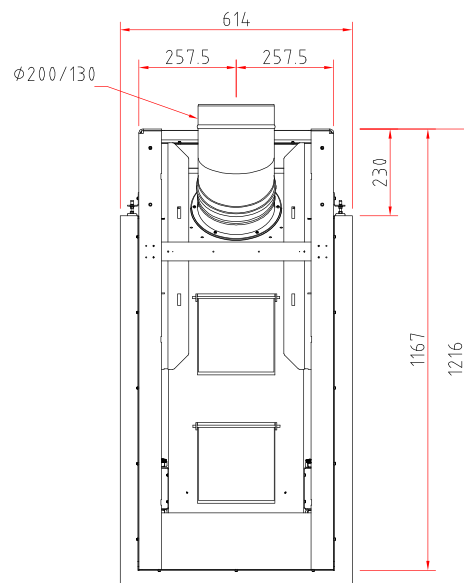
Front view, scale 1:20



Side view, scale M 1:20



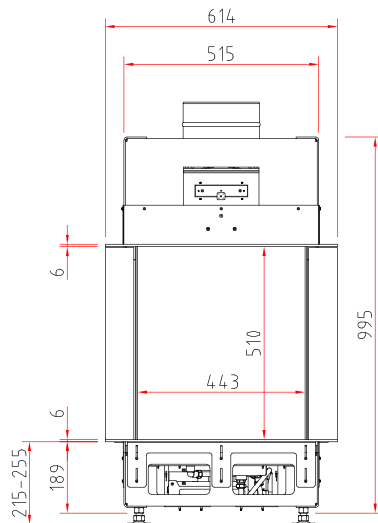
Top view, scale 1:20



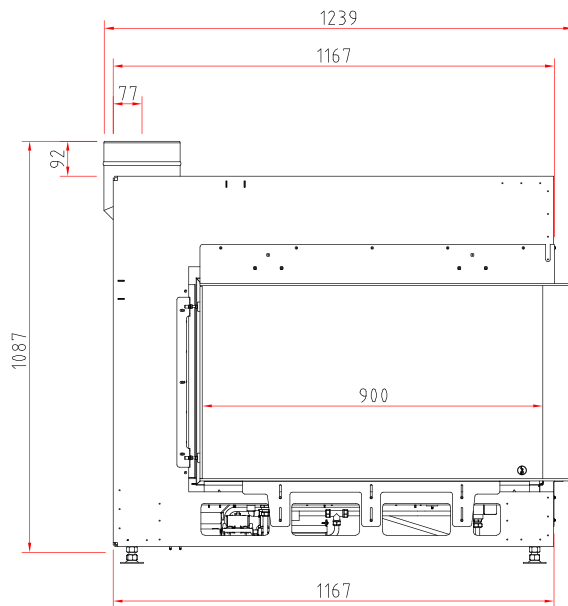
# Ekko G U 45(90)

Dimensional drawings for ceiling connection

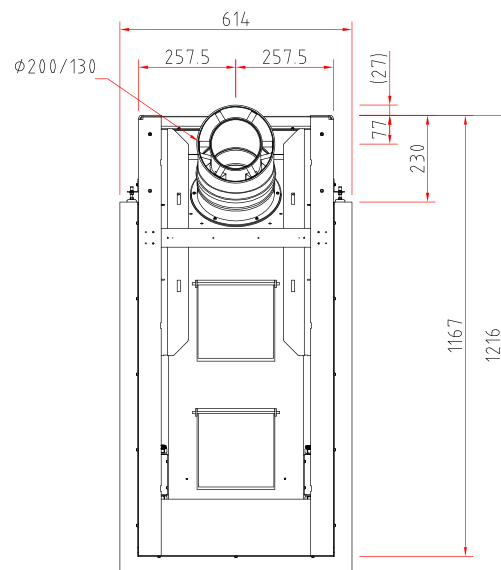
Front view, scale 1:20



Side view, scale M 1:20



Top view, scale 1:20



## Product data sheet

Regulation (EU) 2015/1186 supplementing Directive 2010/30/EU

	<b>Lina G TV 87, Ekko G U 45(90) (Erd-/Flüssiggas)</b>
<b>Supplier's name:</b>	Camina & Schmid Feuerdesign und Technik GmbH & Co. KG
<b>Supplier's model identifier:</b>	Lina G TV 87, Ekko G U 45(90) (Erd-/Flüssiggas)
<b>Energy efficiency class:</b>	A
<b>Direct heat output (kW)</b>	9,8
<b>Indirect heat output (kW):</b>	–
<b>Energy efficiency index (EEI):</b>	92,4
<b>Energy efficiency at nominal heat output (%):</b>	86,0
<b>Notes for specific precautions, installation or maintenance:</b>	Please note the reference in the assembly instructions and operating manuals!

*There may be modifications to technical details caused by ongoing developments; subject to errors and omissions. Dated: 11/2021*

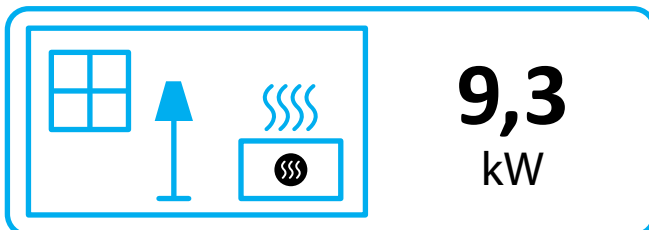
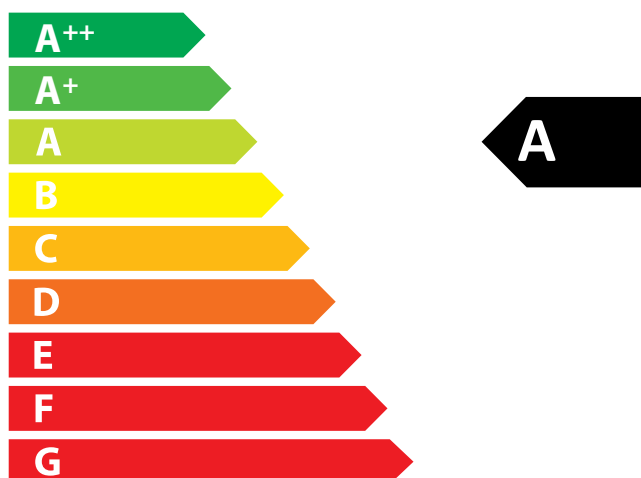


**ENERG**  
енергия · ενέργεια



Camina  Schmid

Lina G TV 87, Ekko G U 45(90)  
(Erd-/Flüssiggas)



ENERGIA · ЕНЕРГИЯ · ΕΝΕΡΓΕΙΑ · ENERGIJA · ENERGY · ENERGIE · ENERGI

2015/1186